



# Moulton Matters

SEPTEMBER 2016

**Callum wins Gold**



## Contents

Page 3	Parish Council News	Bill Rampling
Page 3	Luncheon Club update	Lisa Rampling
Page 4	St Peter's Church	Bob Saltmarsh
Page 5	St Peter's Church	Anne Garmston
Page 6	Panthers	Nicola Talbot
Page 7	Fireworks Display	Liz Burch
Page 9	Moulton CEVC Primary School	Debs Shipp
Page 11	Harvest Supper	Bob Saltmarsh
Page 13	Community Choir	Marion Brown
Page 14	Moulton Millenium club	Liz Burch
Page 15	Flooding	Lisa Rampling
Page 15	McMillan Coffee Morning	Jill Goodwin
Page 16	New Yer's Eve Dance	Jill Goodwin & Lisa Rampling
Page 17	Christmas Fayre	Sally Lambourn Brown
Page 19	Gold Medal Success	Ron Wallwork
Page 22	Community	Jill Goodwin
Page 25	Moulton in Bloom	Dorothy Bowes
Page 25	Christmas Table Decoration Workshop	Dorothy Bowes
Page 25	Speed Watch	Tim James
Page 27	Advice to prevent stick injuries to dogs	Ash Tree Vets
Page 28	County Councillor news	Robin Millar
Page 30	Farriers Grange news	Julie Bonner
Page 32	RSPB events	David White
Page 33	RSPB September Spiders	David White
Page 36	Bingo	Jill Goodwin & Lisa Rampling
Page 36	Oil Ordering Scheme	Lesley James
Page 37	Trade Directory	
Page 38	Village Hall User List	Jill Goodwin
Page 39	Useful telephone numbers	Jill Goodwin

If you have an advertisement or an article you would like to submit for this newsletter we publish them quarterly. Please ensure that articles reach us by the 14th November for distribution in the first week of December.

**Lisa Ramping 552631 and Jill Goodwin 552851**

# **News from the Parish Council**

---

The old adage 'that you can please most of the people most of the time, but you can't please all the people all the time' particularly applies to Parish Council decisions.

We conduct a balanced debate or discussion before reaching any decision and if necessary will vote on particular proposals and go with a majority decision. However the number one area of controversy with the public is always planning.

The public are invited to attend any meeting and take part in the debate when appropriate. Therefore it is in my opinion unfair on the members of the Parish Council to subsequently receive criticism when they have followed a democratic process and particularly to have the value of the Parish Council criticised in general.

Members of the Parish Council are democratically elected volunteers who serve for four years at a time. We voice the opinions, concerns and aspirations of the village community.

The role also includes representation at Suffolk wide forums and council meetings when necessary to address all sorts of issues around planning developments, infrastructure, health, highways, education, economy etc.

In the light of the Secretary of State's decision not to allow the proposed new homes on the Hatchfield Farm development, there will be increased pressure for additional housing in our rural communities. There is the possibility of between 500 and 1000 houses being built at Kennett opposite the school and whilst these will be in E. Cambs, combined with all the additional development of the 300 houses that have either recently been built or waiting to be built at Kentford, this will have a dramatic effect on the future of our community.

Now more than at any other time we need to hear and represent the views of our Community. I would urge you to come along, hear what is happening in the village and locally and tell us what you think.

All out agendas and minutes are available on the village website and displayed on the notice board outside the shop. We look forward to seeing you.

*Bill Rampling - Chairman*

---

## **Luncheon Club**

On the last Tuesday of each month about fifty of us meet in the village hall. We enjoy soup, a selection of different breads and scones or cakes. It is lovely to chat and catch up with friends and we see new faces each time. Do come along and join us. Everyone is welcome and if you need assistance with transport please give me a call. The cost is only £2 per person. Lisa Rampling 552631

# St Peters Church News

---

The completion of the toilet and kitchen space finish the second phase of the planned improvements to the amenities within the church. It has taken eight years from planning, fundraising and physical work to reach this point. We now need to raise funds to be able to complete the final phase, which is to repair and decorate the walls within the chancel, Nave and both the North and South Aisle's. This will be expensive due to the scaffolding which will be needed and the estimate is approximately £25,000 to £30,000, it will take us a long time to raise this amount. But in the end this wonderful building will be in better shape to serve the village in years to come.

Whilst our Benefice of five Churches (Dalham, Gazeley, Higham, Kentford and Moulton) are interregnum whilst the Diocese seek a replacement for Stephen Mitchell who retired in May of this year, services continue in all our Churches. Right is a list of services within the Benefice for September and October:  
*Bob Saltmarsh, Church Warden*

---

September			
4th	Communion	9.15am	Higham
	Family Service	10.30am	Moulton
	Evensong	6.00pm	Kentford
11th	Benefice Service	10.30am	Dalham
18th	Communion	10.30am	Moulton
	Communion	6.00pm	Kentford
25th	Communion	9.00am	Dalham
	Morning Worship	10.30am	Gazeley

October			
2nd	BENEFICE HARVEST	10.30am	Moulton
	Pet Service	6.00pm	Kentford
	Communion	9.00am	Dalham
9th	Communion	10.30am	Gazeley
16th	Communion	10.30am	Moulton
	Communion	6.00pm	Kentford
23th	Communion	9.00am	Dalham
	Morning Praise	10.30am	Gazeley

I had hoped to report back to you that the meeting planned for June 22nd with Bishop Martin Sealey had been followed by the advertisement for Stephen Mitchell's replacement. The meeting was postponed.

Our 5 churches supported the plan that Stephen had envisaged and nurtured. A few objections however had been raised from within some of the other parishes that would make up the new Forest Heath Team Ministry. These objections resulted in 'hearings' followed by further consultations with diocesan clergy and officers. This outcome meant delay in the recruitment process. I can assure you members of our Benefice Council, drawn from Dalham, Gazeley, Kentford, Higham and Moulton have made their views known clearly to all the relevant people. I hope to tell you better progress is made this autumn.

However, progress has been made with the tower improvements during the summer, and our services have continued with their pattern of regular worship. I do here thank the members of the Flower Arranging and Church Cleaning Teams for their particular help during this phase, their adaptable timings and extra duties. The very considerate contractors have helped enormously.

### **SUNDAY 31ST JULY**

This day was an opportunity for some of us from this group to join the Lark and Lee group for their Benefice Service at All Saints Church Worlington. We were warmly welcomed and the webcam pictures of their Swifts Conservation project during worship gave a fascinating insight to their commitment to treasure this particular gift of God's creation. The refreshments, conversation, the Pimms, and the aerial displays of the swifts outside in the sunshine left us with delightful memories of another congregation within the Forest Heath Team.

### **HARVEST BENEFICE COMMUNION SERVICE 2nd OCTOBER 10.30AM**

Revd. Dr. Colin McCarty will lead this service and whilst our money collections will be for the Barnabas Fund which supports Christians in other parts of the world, our local collection of goods will be donated to Newmarket Food Bank. If you wish to contribute please leave items in church between 10am – 4pm on Saturday 1st October. These could include –

Tinned foods – meat, fish, beans, fruit, vegetables,  
Packet - soups, flour, sugar, dried fruits,  
Jars – gherkins, beetroots, olives,  
Breakfast cereals,  
Biscuits, cereal bars, chocolate, sweets, cakes.  
Cooking Sauces, tomato sauce, chutney, mayonnaise, salad cream,  
Water, lemonade, squash, cola, juices, soft drinks,  
Seasonal - Christmas puddings, mincemeat, cranberry sauce, apple sauce.

As Autumn unfolds we will be thinking also of the people preparing now for their marriages in St. Peter's Church, the young babies recently baptised and their families. The people in our community who are sick and in need of care. For Moulton Primary School as they begin a new phase of leadership, all children and young adults joining new classes, new schools, colleges and universities, apprenticeships and training. Please remember them in your prayers. Thank you.

*Churchwardens: Anne Garmston 01638 751188 Bob Saltmarsh 01638 750190*

# Panthers Football Club August 2016

The new football season is due to start any time now, and the teams have spent the last few weeks training and getting back to match fitness after the summer break. In the next Moulton news I hope to let you know how the teams are getting on.

Panthers now have teams at Under 17, Under 15 and Under 12's all of which play in the Cambridgeshire Colts League. So from September through to May the teams can be seen playing home matches on either Saturday or Sunday mornings.



We would like to say thank you to the Moulton Millennium committee for purchasing a new Village goal, which has been left on the green all summer to allow a lot of the village children to play football.

Maintenance has continued on the village playing field over the summer to try and keep it in as good as condition as possible. The Panthers committee would like to say a BIG THANKYOU to Richard James who re-seeded the playing field with a special slot seeding drill. Thanks also goes to Douglas James and the Parish council for looking after the playing field for everyone to enjoy and for supplying the seed.

But this would not be possible without all our coaches and the sponsorship from Mike and Kathy at Moulton Stores, RaceRight, Gotcha security, Wilson Physiotherapy Ltd and Adocks. So a BIG THANKYOU!!! But we are still looking for new sponsors, if you would like to sponsor a team kit, Jumpers or any kit/ training equipment to support your local youth teams we would love to hear from you.

## THE PACKHORSE INN MOULTON

### 2 COURSES £18 or 3 COURSES £24

#### MONDAY TO THURSDAY LUNCH

Bring original copy of advert for a FREE\* pint of beer or glass of wine with food.

\*1 drink per original copy of this advert. We are happy to offer couples from the same household two complimentary drinks, but larger parties will be restricted to one free drink per original advert.

The Packhorse Inn Bridge Street Moulton Newmarket Suffolk CB8 8SP

01638 751818 [info@thepackhorseinn.com](mailto:info@thepackhorseinn.com) [www.thepackhorseinn.com](http://www.thepackhorseinn.com)

**MOULTON MILLENNIUM CLUB**

# **FABULOUS FAMILY FIREWORK PARTY**



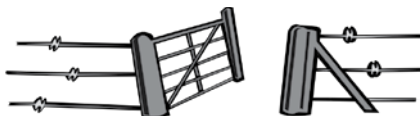
**Saturday, 5th November 2016**

**In the Church Meadow**

**Adults - £5 Children - FREE**

**Bar & Food**

## Threlfall Contracts



**FOR**  
**Garden maintenance**  
**Paddock and Domestic Fencing**  
**Hedge Cutting and Planting**  
**Chain saw work**  
**Tree Pruning**  
**Other work can be undertaken**

Contact Bruce  
On  
07876254962 or 01638 507623

# Pilates

at Moulton Village Hall

**Thursdays 9:15 - 10:15 am**

### Benefits of Pilates

- Strengthens and Tones Muscles
- Reduces Stress/Tension and Boosts Energy
- Creates a Stronger Back and a more Flexible Spine
- Offers Relief from Back Pain and Joint Stress
- Improves the way your Body Looks and Feels

For more information call Alison on:

01638 507784 or 07752 360839

e-mail: [alisonwilson6@hotmail.co.uk](mailto:alisonwilson6@hotmail.co.uk)

Pilates and Zumba classes also held in  
Newmarket and Stetchworth

**All ages and abilities welcome**

## MOULTON PET SITTERS

**FOR PETS WHO LIKE THEIR  
HOME COMFORTS**

**DOGS TO STAY IN OUR HOUSE  
WITH US OR WE CAN STAY IN  
THEIR HOME**  
**DOG WALKING / CHECKING YOUR  
PETS AT HOME WHILST YOU ARE  
AWAY**

Contact: John & Jackie Chapman  
**(01638) 454881**  
Fully insured pet sitters

[www.moultonpetsitters.co.uk](http://www.moultonpetsitters.co.uk)

## Suffolk Maids

*The Housekeeper Register*

### Domestic Cleaning & Ironing Service

At Suffolk Maids we maintain a fast growing register of reliable local housekeepers who offer cleaning and ironing services to private homes.

### Personal Housekeeper

### Unique Security System

### Fully Insured

All for less than £9.75 per hour.

For further information please call:  
**0844 544 9905**

or visit our website at:  
**[www.suffolkmaids.co.uk](http://www.suffolkmaids.co.uk)**



# School news from Mrs Shipp - Headteacher

---



We had a very busy Summer term with lots of successes. We were proud of each of our pupils.

Our Junior Road Safety Officers, Beatrice, Cameron, Jack and Kate, were rewarded with a gold award at Endeavour House, Ipswich. The school council also did a brilliant job with ensuring that all pupils' views are heard. Some of our KS2 pupils sang at St. Mary's Church in the summer term. We received lots of positive feedback and the children had a wonderful time.

Over the summer holidays, our reception area has been renovated: we now have a barked area; we have extended the paved area with an all-weather soft mulch; and we have a new shed to store outdoor resources.

Our PTA continue to do an incredible job. Led by Mrs Baker, they work tirelessly to raise money to purchase resources for the children. Their latest funds bought a set of ipads which will provide lots of learning opportunities for our children.

We were delighted with all of our children who undertook statutory tests (SATs). They remained calm and focussed, and tried their very best. Their results were the icing on the cake! Results will be published on the school website as soon as possible.

Our sports day was full of determination, talent, and sporting behaviour. Our pupils also participated in a multi-skills competition, a kwik cricket competition, quad kids athletics, and a netball tournament. As ever, our pupils' behaviour and efforts were exemplary.

We were sad to say goodbye to Mrs Snowdon, Mrs Allen, and Mrs Walsmley at the end of term. They will all be missed enormously. We also said goodbye to Elissa Rampling, Sandra Arya, and Reverend Mitchell, three of our school governors. They were an integral part of our governing body, and we are extremely grateful for the time they gave to us.

This term, we officially welcome Mrs Emma Chittock to the team. Mrs Chittock worked alongside Mrs Fiddes in Y1 for her teacher-training year, and she will teach Year 2 this year. We also welcome Mrs Zoe Coward who will work as a teaching assistant in KS2. We are also pleased to welcome some new members of the governing body: Sue Allott, Reverend Canon Sandie Barton, Angharad Ellis Owen, and Dave Wood. Their combined skills will help to ensure that our school is the best it can be.

We also look forward to welcoming lots of new families to our school in the autumn term.

Our leadership team sees lots of changes in September: Mrs Gilmore, our Y6 teacher, will become the new deputy head teacher in September, and Mrs Gaffney, our Y4 teacher, joins the leadership team as special education needs coordinator (SENCo). I am very much looking to working with a strong leadership team, and the rest of the staff to lead the school into new and exciting adventures.



Jackson-Stops  
& Staff

# Thinking of selling or letting your property?

Please contact

**Ed Russell** BSc (Hons) MRICS

**01638 662231 / 07780 450020**

**ed.russell@jackson-stops.co.uk**

**ESTABLISHED IN NEWMARKET FOR OVER 60 YEARS**

Specialists in residential and equestrian property with a network of  
over 40 offices including 8 in London and 6 in East Anglia

## SUE HART

PODIATRY/CHIROPODY

BSC (Hons), MCHS

HPC Registered (CH.12573)

**EVENING & DAYTIME APPOINTMENTS**

*Treatments include:* Chiropody foot care

Biomechanical assessments

The diagnosis and prevention of foot & lower limb ailments

Diabetic vascular & neurological assessments

Fungal infections, Athletes foot

**ADVICE**

Home: 01638 555187 Mobile: 07710 155409

susie.harty@googlemail.com

15 Newmarket Road • Moulton CB8 8SS

# It's Harvest Time Again!



St. Peter's Church  
invite you to join them for their

## **HARVEST SUPPER**

on

**SATURDAY 1st October, 2016**

**at 7.15pm for 7.30pm**

**in the Village Hall**

With musical entertainment from

**Margaret Saltzmann**

There will be a BAR selling beer, wine and soft drinks

**Tickets: £10.00 inclusive of 2 course Supper**

**From** - Moulton Stores or

Bob & Fran Saltmarsh - 750190

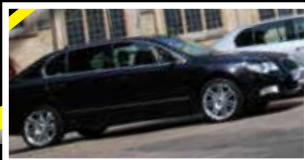
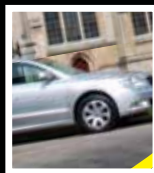
# **A1CARS**

(SUFFOLK) LTD

**24 HOUR TAXI SERVICE**

**AIRPORT TRANSFERS**

**EXECUTIVE SERVICES**



**Reliability, punctuality, safely,  
comfortably and on time serving**

**Bury St Edmunds and surrounding villages**

## **01284 766777**



## **RUMBLES FISH BAR**

**14 High Street, Newmarket (Opposite the Clocktower)**

**Enormous menu selection**

**Generous portions!**

**Top quality food & Friendly Service**

**Tel: 01638 660094**

**Sunday to Thursday 12am to 11pm**

**Friday/Saturday 11am to 11pm**



## **Moulton Community Choir**

Summer round up and looking ahead to Autumn 2016

Our fundraising Summer Gala Concert was held on a beautifully warm summer evening in St Peter's Church. There was a great turn out of villagers and people from further afield to hear us sing, finishing up with a medley of well-loved songs by Hoagy Carmichael, The Carpenters and Neil Diamond.

Over £386 was raised for the continued refurbishment of our beautiful 14th Century St Peter's Church. We look forward to the opening of the new facilities soon.

After the concert both the singers and the appreciative audience tucked into a sumptuous buffet of savoury and sweet delights all provided by members of the choir. Liquid refreshment of various kinds was competently supervised by longstanding churchwarden Bob Saltmarsh, ably assisted by Fran.

The choir was also invited to sing at Ashley Fete on Sunday 7th August to raise funds for the local Air Ambulance service. Despite the unexpected accompaniment of beautifully blistering sunshine and very strong gusts of wind we held on to both our music scores and our dignity giving our audience an uplifting medley of bright and breezy songs, which were very well received!!

September 2016 will see us increasing both our repertoire and choir numbers with new medleys of songs from a wide variety of sources and potentially four new members. We still need more men please !!

As part of our community involvement the choir is also planning to sing at

The Affleck Arms and Tattersalls Carol Concert in December.

We hope to continue to practise and rehearse each Tuesday from

6-45 pm to 8-15 pm in Moulton Primary School.

We are always ready to welcome new members and

for further information about joining or booking the choir please contact

Marian Brown on 01638 552953 or email [music@thebrownfamily.biz](mailto:music@thebrownfamily.biz)

# Moulton Millennium Club

---

The Fun Day and Duck Race enjoyed by so many villagers, friends and family raised £3,886.00

Thank you to everyone who contributed in every way, whether by sponsorship, marking the race lanes, putting up and taking down marquees, giving a tombola prize, cooking pork and manning stalls. It certainly could not be done without all the extra pairs of hands.



So many people comment on how lucky we are to live in a village with such a strong community spirit. We are ever grateful to those who give their time and energy. Our meetings are open to anyone with ideas and a willingness to help organise events and entertainment for our village.

In fact, we are in need of younger help, we have worked out that the average age of helpers on the Fun Day was well over the official retirement age !

If anyone would like to be involved (not necessarily on a long term basis) maybe you have contacts in a certain area or an idea for a one off event, please get in touch.

## Formation of MMC

---

In 1999 several like-minded villagers got together to organise a black tie event to welcome in the New Year. Hence the name.

The old Carrot Wash, on the crossroads of Chippenham and Kennet Roads was transformed into a glittering dance hall where those lucky enough to secure tickets enjoyed a four course meal, dancing to live music with champagne and fireworks at midnight. And was a huge success.

The event was never meant to raise money, but with the surplus we formed a committee to organise the first Family Fun Day in the summer of 2000.

The money raised from this and subsequent events is used for the benefit of the village. All clubs, charities and (non-profit) organisations can apply to the Millennium Club for funds. In recent years we have purchased a new oven and dishwasher for the Village Hall. The defibrillator in the hall car park. New goal posts for Panthers Football Club, Funded parents on Coaching courses. A lump sum to St Peter's church to enable them to apply for grants. The Moulton Planting Scheme and recently 'Marker Carrots' for the Veterans Football Team, to enable easier marking of the pitches.

So please come forward and help us to continue to entertain and raise funds for the benefit of everyone in our village

*Liz Burch, Secretary MMC*

*Tel 01638 552055 Liz.daleburch@btconnect.com*

# Flooding

---

In June we saw considerable flooding in the village as water came down Cheveley Road and washed through garages and down into St Peter's Avenue and St Peter's Close. This caused a lot of distress and concern to many residents. Lots of friends and neighbours helped to sweep the water away.

The Parish Council contacted Suffolk County Council and also local land owners to help to clear up the mud once the water had dried off.



In the period mid April to the end of June 90 vehicles were caught exceeding 34mph, the fastest 50mph in Newmarket Road. On average one in every five cars passing was speeding and this equated to one every five minutes throughout all the checks.

It's a sorry state of affairs to see several local cars exceeding the speed limit in the village.

The data from the fixed camera has been passed on to the police who should take an interest in the speeding issues we have in Moulton. *Tim James*    *timjam@hotmail.co.uk*    *07768798066*



# *New Year's Eve Dinner and Dance*



*Three Course Meal and Bar  
DJ and Live Music from*

*Singing Sensation 'Naneth' (participant in 2015 X Factor)*

*Tickets will be available from mid November from the  
Village Stores and Post Office*

*More details to follow in the Autumn edition of Moulton  
Matters*



**St Peter's Church**

# ***CHRISTMAS FAYRE 2016***

**Saturday 3rd December**

**10.00am to 3.30pm**

**Moulton Village Hall**

Lots of exciting stalls which will include

Face Painting, Cakes, Cards, Gifts, Scarves, Photographic Art, Christmas Decorations and  
lots more ....

Raffle

Mulled Wine, Mince Pies, Teas & Coffee



Please take donations of bottles for the Tombola to  
Sally Lambourn-Brown, Cherry Tree Cottage, The Street

01638 554382

# Moulton

EVENT PLANNERS

We can cater for all your events at Moulton Village Hall or elsewhere including parties, weddings, conferences, seminars, dances, etc.

Contact Lisa 01638 552631 or Jill 01638 551851

**WE ARE  
MACMILLAN.  
CANCER SUPPORT**



Please come along and join us between 10am and 12 noon on September 30th on the playing field opposite the Village Shop. With your help we can make it a really fantastic fund raising event.

## **Callum Wilkinson – World Junior Champion**

In Bydgoszcz, Poland, on 23<sup>rd</sup> July, Moulton race walker Callum Wilkinson won the World Junior 10km gold medal in emphatic style. What follows is the IAAF official report.

There's only so much waiting anyone can take. For 10,000m race walk winner Callum Wilkinson, his limit is about 15 minutes. That's roughly how long the Briton waited in the middle of the lead pack before sweeping to the front and cranking up the pace with each lap.

The opening tempo was slow, with Turkey's Salih Korkmaz taking the field through 1000m in 4:17.16 and 2000m in 8:40.38. Half a lap later, Germany's Leo Kopp decided to take up the pace and he led through 3000m in 12:54.57.

The pace had increased, but it still wasn't fast enough for Wilkinson's liking.

Within the space of one lap, Wilkinson had taken pole position and stretched out the lead pack. Korkmaz was still near the front, so too was Noel Ali Chama of Mexico. But from 4000m onwards, reached in 17:02.91, Wilkinson did not relinquish his lead.

After another 4:08 kilometre to reach half way in 21:11.75, Wilkinson moved up another gear and began to churn out sub-four-minute splits for the remaining 1000m sections. A 3:58.47 kilometre saw the lead pack reduce to nine. Manuel Bermudez, the silver medallist in the junior race at the IAAF World Race Walking Team Championships Rome 2016, began to drift behind the leaders as the Spaniard struggled with a minor ankle injury.

At 7000m, Ecuador's Jhonatan Amores and Ethiopia's Yohanis Algaw were still doggedly sticking to Wilkinson, but the Briton was showing no signs of stress. Wilkinson covered the penultimate 1000m section in 3:53.56 and just four men were left in contention.

As the pack went through the bell, Algaw was the first to drop off, leaving just Wilkinson, Amores and Korkmaz in the hunt for medals. But those positions remained the same throughout the last lap as Wilkinson stretched away to win in a national U20 record of 40:41.62, crossing the line in utter disbelief.

Not only was it the fastest time in the world this year by an U20 athlete, it also takes Wilkinson to second on the senior British all-time list for the distance.

"Every lap of the track made me more and more confident," said Wilkinson after covering the second half in 19:29.87 and the final kilometre in 3:44.51. "I can't believe I did it. I knew I could, but I can't believe it. I'm just in shock. It's everything I wanted this year. This is it."

His gold medal is Britain's first race walking title in a major international age-group competition. The last Briton to win a global race walking title was 1964 Olympic 20km champion Ken Matthews.

Amores finished second in a PB of 40:43.33, taking Ecuador's first world U20 medal in this discipline since Jefferson Perez won gold in 1992. Korkmaz crossed the line in 40:45.53, while Algaw was fourth in an African U20 record of 40:55.96.

### **Jon Mulkeen for the IAAF**

See post race interview: <https://m.youtube.com/watch?G3Gvx>

Three days after the race at the village hall, to his amazement Callum was greeted home by Parish Council Chairman Bill Rampling, Newmarket Mayor Andy Drummond and a large number of villagers and athletic supporters who travelled some distance to be part of the welcome.

Ron Wallwork

**Callum's disbelief  
at winning**



**Sheer  
jubilation**





Moulton Community at work and play



# Moulton Community

---



This month Jerry and I will celebrate having lived in the village for eight years. When we first came to Moulton to view a property (the one we bought) we had a check list of what we wanted from the village where we would eventually settle and 'A Community' was top of the list.

As we were moving away from friends and family to an area where we knew no one we needed to know that there were events and group meetings going on so we could meet people and get involved. Moulton ticked that box!

I was reminded about this recently when the Village Hall Committee and Parish Council requested some volunteers to help with a few jobs around the hall. We were delighted that almost 20 people turned up to help – considering it was a Saturday morning in the middle of August it was a great turnout. We managed to cut back and weed the hall garden, cut the hedges and bank, install some prevention parking posts, make a start on painting the play equipment and paint a corridor in the hall! We also helped dead head the bedding plants at the cross-roads and planters and weed the main bed. Thanks to everyone who helped – and thank you to Mike and Kathy as the bacon rolls and coffee went down a treat!

Talking of planters it is thanks to the community that we now have an abundance of colourful flowering troughs and planters to brighten up the village at every turn. Thank you to all those involved in planting and watering – especially Dorothy and Ron for getting us organised. The autumn plant date will be 1st October or contact Dorothy (750362) for more information and please help with funds to ensure we have beautiful plants for the autumn and winter. There will be a box in the shop for your contributions and a special fund raising Christmas decoration workshop on Sunday 11th December.

Mike and Kathy at the shop also have a show of colourful plants which they maintain all year round. A delight for their customers especially those who stop for a coffee and a chat. The shop offers so much more than a loaf of bread or a postage stamp. Sometimes I wonder if village people realise what an asset we have with our shop and post office. It is central to our community as not only a convenience store but a place to meet people, stop and have a natter - especially important for new people who move into the village. Mike, Kathy and the team will always go that extra mile for their customers so why not show your thanks and support them by using the store. In this day and age of cut-backs 'Use it or Lose it' is very apt!

A new addition to the village is the Luncheon Club held on the last Tuesday of each month from 1 pm until 3 pm at the Village Hall. Everyone is welcome and if you do participate you won't be disappointed with the tasty homemade soup and scones on offer – all for just £2 per person. Of course, as with all events, they take organising and for the lunch we have to thank the cooks who volunteer to provide the food. So big thanks to them not just for cooking but also for setting up and clearing away too.

From Community lunch we move to Community Speed Watch. Thank you to those who stand out in all weathers to collect speeding data which is passed on to the police and in the long run will make us a safer village to live in. With the excessive speeds they sometimes record we certainly need their presence to remind us all that the maximum speed limit is 30 miles per hour in the village.

We can go on singing the praises of the village community but why not let the Community Choir do that. Set up a couple of years ago, the choir goes from strength to strength giving performances all over Newmarket – see their news page for details of forthcoming performances.

The Moulton Matters is helps to keep everyone informed of events and news. We try to deliver a copy to every household in the Moulton Parish. The issue is funded from advertising alone and we use Burwell Community Print to produce the copy four times a year. Thank you to all those who regularly contribute articles and news, advertise regularly and to those who pound the streets of Moulton delivering copies.

Let's not forget the Church and the school too. Whatever your faith the village Church pulls the community together for the Harvest Festival, Christmas Fayre, the Christingle service for the children and how could we not mention the famous annual Rock in the Meadow event enjoyed by all.

Last but by no means least we have our great Village Hall enabling community groups and events to be hosted in very pleasant surroundings – from the young to the not so young it is a place for the village and I am happy to report is used by the village every day of the week.

We (Jerry and I) feel lucky to be part of the village and are now happy to say that we have a great many friends in the village and are delighted to be part of a flourishing community in Moulton.

If you would like to join any of the groups mentioned above or get involved please contact me on 551851.

*Jill Goodwin, Secretary Village Hall Committee*







**3 PANE ALUMINIUM  
BIFOLD DOORS  
IN WHITE,  
GREY OR BLACK  
ONLY**

**£2685**

**INCL VAT & INSTALLATION**

**NOW MANUFACTURED IN OUR FACTORY IN IPSWICH  
SPECIALISING IN ALUMINIUM PRODUCTS**



**Back doors  
£550**



**Front doors  
£650**



**Composite doors  
£895**



**French doors  
£975**

**All doors include VAT & installation**



**15% OFF  
ALL 'A'  
RATED  
WINDOWS**



**CONSERVATORIES  
DESIGNED  
FOR YOUR  
INDIVIDUAL  
REQUIREMENTS**

**e: sales@micronwindows.com  
Unit 5, Acorn Business Centre  
Oaks Drive, Newmarket, Suffolk.  
Tel: 01638 751122**



**micron**  
windows doors & conservatories

**OPEN:  
MON-FRI  
9AM-5PM**



# Moulton in Bloom

---

It's now time to winter planting around the village. For those who wish to help clear out the old plants and plant the spring bulbs & bedding plants we will meet at 10am on Saturday 1st October. Please do come along with think about the your gloves and a trowel.

I'm sorry to say funds are low at present, so any donations would be appreciated. Please give me a call on 750362 or drop your donation into the shop.

Thank you to all the kind people who have helped to plant and maintain the flower beds & tubs, it takes a lot of commitment to water every day. We only ask that you water the beds or tubs near you so it is not too arduous. More volunteers would be wonderful so please get involved.

The colour around the Village for the Queens Birthday has been well received with lots of comments from people passing either walking or stopping at the crossroads when I've been watering or weeding. So it is well worth doing!! Thanks, *Dorothy Bowes*



# Christmas Table Decoration

---



To help with fundraising and by popular demand Janet James has promised to return to run a morning workshop to make fresh flower Christmas table decorations. Janet is a National Association of Flower Arrangement Societies (NAFAS) member and judge. Last Christmas she came and demonstrated a door wreath and it was a really enjoyable morning and those of us who attended were thrilled with our 'masterpieces'.

This year the date will be Sunday 11th December from 9am - 12 noon. The cost will be £25 to cover all materials. Tickets can be bought from Dorothy Bowes on 750362 before the 27th November. With regular watering these decorations will last until Christmas Day. All profits will be for the Village flowers.

# R H Genealogy & Family Tree Research


**Let us do the research,  
You have always  
Wanted to do**

**Contact us for estimates.**

**Tel:07866 983279**

**Email:roberthayes1978.rh@gmail.com**

**web:www.rhfamilytree.com**



## Advertising Rates

Trade Directory	£30 for 4 issues
1/4 page	£12.50 per issue (£50 per 4 issues)
1/2 page	£17.50 per issue (£70 per 4 issues)
Full page	£30 per issue (£110 for 4 issues)

**\*Only ads for 4 issues accepted.**

For more information please contact  
 Lisa Rampling 552631 elissa.rampling@gmail.com  
 Jill Goodwin 551851 jerryjill99@hotmail.com

## COURT NEWS

*Delivering News to your door*

### We deliver!

**Newspapers & Magazines  
to MOULTON**



**If you would like more  
information or to place an order  
please telephone**

**01284 702 447**

# A Sticky Situation at the Vets

Hector the labrador came to see us as at the vets because his owner had noticed that his breath had really started to smell. Hector was still behaving like the bouncy young Labrador that he was, full of beans and eating as normal. We were therefore all amazed to find, when we examined his mouth under anaesthetic, that a piece of stick had lodged across the top of his mouth between his back teeth. The stick had embedded in the soft tissue of the hard palate causing a nasty infection. Luckily we caught it just in time before the infection caused any damage to the bone separating the mouth from the nasal cavity. After removing the stick we started Hector on an extended course of antibiotics and the lucky boy has made a full recovery.

Stick injuries are all too common at the vets. Most tend to occur when a dog runs onto a stick that has rammed in the ground. This forces the stick deep into the mouth causing damage to the tissue of the tongue and throat and even, with more serious consequences, tearing the oesophagus or trachea further back. These types of injuries often require extensive surgery.

Throwing sticks has long been a favourite activity to liven up a dog walk but owners are now being warned against it as it can cause such horrific injuries. We would advise to use only balls, Frisbees, soft toys or rubber sticks from pet shops.

The Team at Ash Tree Vets 01638 554477



  
Ash Tree  
Veterinary Centre

- Brand new purpose built high quality veterinary surgery
- FREE healthy pet check with registration
- Complete professional and friendly service from preventative care to diagnostics and surgery
- LARGE free car park

E: [enquiries@ashtreevets.com](mailto:enquiries@ashtreevets.com)  
W: [www.ashtreevets.com](http://www.ashtreevets.com)

Ash Tree Veterinary Centre  
6 Pilgrim Court Kennett  
Newmarket CB8 8FA



Call now to book your appointment

**01638 554477**

# Councillor Robin Millar

---



Let me first of all say a big thank you for your vote in February and your support since then. It has been really great being able to get out and about in Moulton since I became County Councillor. It's inspiring to see how much effort residents are prepared to put into making their community a safe, healthy and happy place to live, work and play. Frankly it's a privilege being in a position to support such excellent work.

I've been in regular contact with the Parish Council and residents on a wide range of issues. I have also attended a couple of parish meetings which are always extremely valuable and informative. Being clear about

what you want is the only way to have a full and frank discussion about what is possible and what is not. My thanks to each of you who have contacted me who make that possible.

I came into the role with a long list of outstanding issues but I have worked with Parish Councillors and District Council colleagues to resolve these. Many of these issues are a result of the new housing developments in the Parish and it has not been able to resolve all of them – the gap left by a developer who goes into Administration is something as a council we can help bridge, but not completely. As some of you will know, this has triggered a review in the District Council of the way developments proceed and a consideration of the use of financial bonds to ensure infrastructure and amenities can be provided for even if a developer disappears.

On the subject of housing, I'm sure the recent announcement regarding Hatchfield Farm has not gone unnoticed. Housing has been a particularly emotive subject across the District for the 13 years I have been involved in the planning process. I respect the Secretary of State's right to intervene and determine this outcome but I supported the council's decision to allow the development and feel keenly the disappointment in Newmarket, and surrounding villages at this Westminster decision. The council's original approval of the 400 homes was a true reflection of residents' wishes - and all the numbers and analysis confirmed that need. However, the Secretary of State had a different perspective and thought differently. It is an exceptional intervention and one for which there are consequences - if Newmarket is a centre of national economic significance, exempt from the national house building priority and planning policy and then there must be support, from government, to come with that. There is a lot to do in the coming weeks and months to respond to this, and I will support our MP in bringing together the council, racing and landowners to see if a new solution can be proposed which is acceptable. One thing is for sure, I do not believe the surrounding villages can simply absorb and provide for this unmet housing need. I will be sure to make this clear at any meeting I am involved in.

Another exceptional local event with consequences was the flash flooding on St Peter's Close and beyond. I was grateful again to work with residents and the Parish Council who provided really helpful information I could use to ensure engineers cleared (and re-cleared) the affected streets. I also visited with residents on St Peter's Close affected by the flooding to speak with them and offer whatever support I could in their claims for damage and getting life back to normal.

There isn't room here for everything else that has been happening – it feels like politics has been as busy locally as it has nationally. Across the County there have been changes to public transport, the Fire Service, waste handling and more. A consultation on a devolved arrangement (more powers from Westminster, more local to Suffolk) has just concluded and there will be a vote on its progress in October. There is an important consultation on health services also ongoing at the moment as they try and find ways to save money. However, top of my list for Moulton over the next

few months is the school: meeting the new Head Teacher, trying to secure a paved footpath along the side of School Road near the school and addressing the potholes and poor road finish on the approach to the School Road junction.

Thank you again for the privilege of representing you. If you have any questions, ideas, opinions or just want to introduce yourself, feel free to contact me on Facebook (Cllr Robin Millar), by email or telephone using the details below.

Home address: 42 Barry Lynham Drive, Newmarket, Suffolk CB8 8YT

Mobile: 07545 423782      Bus. email: robin.millar@forest-heath.gov.uk

## **Thank You Team St Peter's!**

---

Moulton is a fabulous village. We have a pretty location, a magnificent hall, a school, a Post Office shop & café and an inn. Additionally, and still here since the 12th Century, we also have St Peter's Church nestling up on the side of the valley.

It may have been startled medieval oxen carts speeding through our settlement then. Kicking up dust and leaving their skid marks along The Street. Nevertheless, gazing Back to the Future down a Moulton calibrated space-time continuum we notice that St Peter's has survived many historical onslaughts. This is probably due to a very special quality of community spirit which has obviously been present throughout the ages.

Nothing has changed. Even now there are universal examples of Moulton folks still doing everything they possibly can for the benefit of the village. It is a joy to behold; and those reading this know to whom I am referring. So "Thank You" Team Moulton! And "Thank You" to all the other various and integral Moulton "Teams", who show astonishing commitment to each village project. Our core asset is a happy knack of working together in harmony!

There may be a perception that Team St Peter's only includes the regular congregation. Nothing could be further from the truth. At the helm, the Churchwardens are guided by the joint wisdom of The Parochial Church Council, but, in fact... anyone who does anything for Church is a member of Team St Peter's.

This includes everyone involved at each Holy Service, as well as the Flower Team, the Cleaning Team, the annual Strimming Team, the Administrator, the Organists and the Clock-Winding Officer. Also the bells do not ring themselves, and there are numerous other villagers who, quietly and kindly donate their time and skills supporting Rock in the Meadow, Harvest Suppers, Christmas Fayres and Choral Evenings, etc. etc.

It is therefore fitting that this wide benevolent group, along with the entire village, were invited to the "official" tape cutting (by a mystery guest!) of some wonderful new facilities. Amenities only made possible through hard fundraising over many years. The new under-pew heating, toilet, kitchen area and communal space mark a significant new development at St Peter's Church for all the good people living in Moulton.

*Ian Garmston*

# Farriers Grange Children's Play Area Open At Last!

---



After a short delay of only 3 short years the Children's play area in Anvil Way, Farriers Grange has finally opened! The play area consists of wooden apparatus incorporating climbing, balancing and swinging activities laid in a small area with grass and rubber matting underneath nestled between the trees. I would estimate that the ideal age of children using it would be between 3 and 11 years old but of course it is open for all to use.

The play area has been built for what seems like an eternity but had remained fenced off to prevent use. The fencing was erected as a result of a bureaucracy between the handover of the play equipment from Leach Homes (now in voluntary administration) and the Council who needed to formally accept ownership of the play equipment before it could be opened. With help from Moulton Parish Council, Roger Dicker, Robin Miller as well as many residents of Farriers Grange constantly complaining Forest Heath finally accepted ownership. The grass was cut, the fences removed and at last the play area was opened.

Residents of Farriers Grange will also have noticed that the piece of land along Jeddah Way, which is opposite the new Hopkins Homes is looking extremely neglected and over grown. This has largely been caused by lack of ownership! After much hard work the owner of the land was established and the owners agreed to sell it to Forest Heath for the massive sum of a pound! The land transfer is now going through then this will become the next target for the Parish Council, Roger Dicker, Robin Miller as well as many residents of Farriers Grange to campaign to get this area tidied up and maintained moving forward— let's hope we can do this a little quicker than the play park!

*Julie Bonner*





## **Gas & Oil Specialists Servicing & Repair**

Central Heating • Installation & Repairs • Boiler Replacements • Domestic Plumbing  
Boiler Services • Boiler Repairs & Alterations • Landlord Certificates

**01638 781130**

mobile 07785 936648

email [enquiries@heatingcompany.co.uk](mailto:enquiries@heatingcompany.co.uk)

[www.heatingcompany.co.uk](http://www.heatingcompany.co.uk)

4e Rosemary House, Lanwades Business Park, Kentford, Newmarket, Suffolk CB8 7PN



## **Need your oil tank changed?**

**Telephone 01638 781710**

**Mobile 07785 936648**

**Email [enquiries@oiltankchange.co.uk](mailto:enquiries@oiltankchange.co.uk)**

**[www.oiltankchange.co.uk](http://www.oiltankchange.co.uk)**



**SUPPLIERS & INSTALLERS OF DOMESTIC & COMMERCIAL OIL TANKS**

4e Rosemary House, Lanwades Business Park, Kentford, Newmarket, Suffolk CB8 7PN

## September events

**Saturday 10 September**

**September adventure**

**4pm-6pm**

We will take a walk around the reserve looking for spiders and barn owls. As a treat, we will then have a buffet style tea in the visitor centre which will be included in the cost. This will be followed by an evening event at nearby Weeting Heath NWT reserve. Please ask in the visitor centre for more details. **This is a Wildlife Explorers club meeting that is suitable for children aged between five and twelve. Children £3 (Non-members), Children £2.50 (Members) All children must be accompanied and accompanying adults are free. Please ring 01842 863400 or e-mail [lakenheath@rspb.org.uk](mailto:lakenheath@rspb.org.uk); a couple of days beforehand to confirm your attendance so that we have an idea of numbers. Price includes car parking.**

**Saturday 10 September**

**Fantastic Nightfall Flyers**

**7pm-8.30pm**

See the Brecks in a different light. Join us at NWT Weeting Heath Visitor Centre as we search for Nightjars, Bats and Moths. We'll be setting a moth trap before heading to the hides to hear the secretive stone curlew call, go batty over bats and marvel at moths. Afterwards we'll head back to the visitor centre for a hot chocolate and turn detective as we identify our intriguing tracks and trails.

**Venue: NWT Weeting Heath Visitor Centre**

**Cost: £3 NWT members, £3.50 non-members**

**Booking: Booking essential, call 01603 625540**

**Sunday 18 September**

**Ramblers ramble**

**9.30am-3pm**

Join us for a 10 kilometre (Around six and a half mile) guided ramble around the reserve. This will provide a special opportunity to visit parts of the reserve that aren't usually open to the public. We will visit Botany Bay SSSI during the walk, which is an area of original fenland that has never been drained. Please wear long trousers and stout footwear. **Please also bring a packed lunch and plenty of water. Adults £12 Children £7 (Non-Members) Adults £7 Children £4 (Members) PAYMENT TAKEN AT TIME OF BOOKING via [www.wegotickets.com/lakenheath](http://www.wegotickets.com/lakenheath); or by cheque. Price includes car parking.**

**Sunday 25 September Binocular, telescope & (early!) Christmas shopping day 10.30am-3.30pm**

Join us for some impartial, friendly advice on choosing the best binoculars, telescopes and accessories to suit your needs. Take your time comparing the different models and have the chance to try them outdoors, to help you to make the right choice.

Also, If you are looking to start your Christmas shopping early, there were also be a selection of RSPB Christmas cards, calendars & gifts for sale. There will also be the opportunity to pre order items in advance for collection on the day. **Please ring 01767 693333 or e-mail [thelodgereserve@rspb.org.uk](mailto:thelodgereserve@rspb.org.uk); for more details. Drop in event, no need to book.**

Outdoor clothing and footwear is essential and binoculars are recommended.

**Booking is essential for all events unless stated otherwise.**

For all enquiries and bookings, please contact: 01842 863400 or email: [lakenheath@rspb.org.uk](mailto:lakenheath@rspb.org.uk);

**Other Information:** Most events have outdoor components so please dress appropriately. Stout footwear and warm, waterproof clothing are strongly recommended. We suggest you bring a torch to evening events.

**The RSPB is the country's largest nature conservation charity, inspiring everyone to give nature a home.**



# September Spiders

---

I know that spiders aren't everyone's cup of tea. However, September is a really good month to see our eight legged friends so without further ado, I will begin.

I have to admit that until fairly recently, I didn't know much about spiders. However, after a couple of bat nights here at RSPB Lakenheath Fen in Septembers past, when attendees were fascinated by seeing spiders by torch light during the walk, I endeavoured to learn more.

I quickly discovered that that the reserve is home to three distinctive members of the orb weaver family. Although they are not very large (maximum of two centimetres long), they are all very attractive in their own ways. The most numerous is the garden spider. Despite its name, it is found in all sorts of habitats. It is most easily identified by the distinctive cross markings on its abdomen. Indeed, another name for this species is the cross spider.



The other two species of orb weavers are the four spotted orb weaver and the marbled orb weaver. The four spotted orb weaver is pound for pound Britain's heaviest spider. It is virtually all abdomen, which is usually chocolate brown. The marbled orb weaver is a bit of a Fens specialist and the reserve is home to the race *Araneus marmoreus* var. *Pyramidatus*. This particular race of the species is very pretty as the abdomen and legs are a mixture of chocolate brown and marbled colouring.

The great thing about all three of these species is that they are easy to see on the reserve. All you need to do is follow the paths around the poplar woods and you should find their distinctive orb shaped webs in the vegetation alongside the paths.

It is also worth mentioning the rare and impressive wasp spider, which Warden Katherine Puttick found on the Norfolk side of the river in September 2013. As its name suggests, this species has a distinctive yellow and black abdomen. Although it hasn't been seen on the reserve since it was first discovered three years ago, it is well worth keeping your eyes peeled for it as it is spreading across much of southern England.

Slightly closer to home, it is also worth mentioning that as the weather cools down as we go through the month, you are more likely to find house spiders in your house (you know, the large black ones!). Although you may not like doing it, it is very important that you put them back outside. If they stay inside, they are likely to dehydrate and unfortunately die.

I appreciate that I may not be preaching to the converted about spiders, but I hope you have enjoyed this article nonetheless. Have a good month.

*David White, Visitor Experience Officer - RSPB Lakenheath Fen*



## Rothwell's Carpet Cleaning

### Carpet Cleaning & Stone Floor, Upholstery, Rugs

*A few points that make us stand out,*

Rothwell's has been in business since 1993

We're an honest local family firm.

Our large truck mounted machines mean  
more cleaning & drying power  
for the best results possible.

Members of both the NCCA and TACCA.

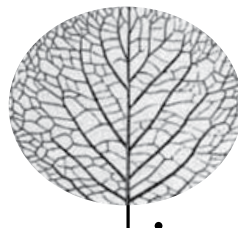
We will move the furniture.

100% satisfaction or it's FREE.

*Call Oliver and Max Campbell  
for expert help today.*

**01638 428 060**

**www.Rothwells.biz**



**napier**  
GARDEN PLANNING

WE OFFER A PROFESSIONAL &  
RELIABLE SERVICE FROM LAWN MOWING  
TO NEW PLANTING PROJECTS

OTHER SERVICES INCLUDE  
TREE SURGERY & HEDGE CUTTING

Please telephone Zara or Francis at

**01638 508 847**

or email us: **napierfz@aol.com**

Westley Waterless, Newmarket

# NU PLAN

## Builders

est. 1978

B A Jones

G Jones

45 Edinburgh Road  
Newmarket Suffolk CB8 0QE  
01638 751176  
07734 795381 07734 795382  
info@nu-planbuilders.com  
www.nu-planbuilders.com



## R. Marshall

MCIPHE RP

**Heating and  
Plumbing Engineer  
Builder**

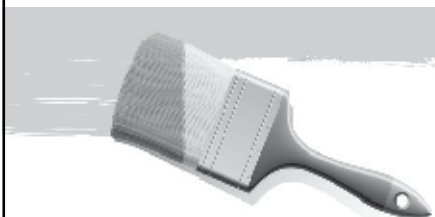
9A Chippenham Road  
Moulton  
CB8 8SN

**Tel: 01638 750488  
Mobile: 07985 303958**

## DALE BURCH&SON

### Decorators

**All aspects of Interior  
&  
Exterior Decorating**



**Established over 25 years  
Free estimates**

**Call 01638 552055**



**Saturday 10<sup>th</sup> December 2016**

**Doors open at 7.00 pm**

**Moulton Village Hall**

Enjoy an evening of Bingo – lots of prizes

**£100 JACKPOT!**

With Mick - Moulton's favourite Bingo Caller !!

**Pay Bar**

**Raffle**

**Entrance :** Adults £3    Children £2

Bingo ticket books on sale £2 each

### **Oil Ordering Scheme**

The next order dates are:

12 September    24 October    5 December ( Christmas Delivery )

June orders total 18,850 litres @ 30.80p. per litre, 32.34p. including vat with a total of 24 deliveries.

Please contact Lesley James on **01638 482012** to place your order..... and save money.

# TRADE DIRECTORY

## I J GARDENING SERVICES

ALL ASPECTS UNDERTAKEN

Tree, Shrub and Hedge Planting/Pruning  
Turfing, Seeding and Garden Maintenance  
Patios, Fence and Trellis Work

TEL 01638 500298

## AROMATHERAPY

& Reflexology by Rosie

Home Visits Available

Or Come and Visit Me In Newmarket

[www.rosiehitchins.co.uk](http://www.rosiehitchins.co.uk)

Tel: 01638 603286 / 07989213147

£10 Off Your First Treatment with this Advert

## G C SORE

For all PVCU installations

Windows, Conservatories, Facias etc  
MANY SATISFIED CUSTOMERS

IN MOULTON

t. 07831 591700

## ELITE ELECTRICAL

DOMESTIC INDUSTRIAL COMMERCIAL

INSTALLATION & MAINTENANCE

P.A.T. TESTING

FREE ESTIMATES / 24 HOUR CALL OUT

tel/fax: 01638 552641

mob: 07816 040672

## RICHARD FORTEY

For the very best

**AERIAL & SATELLITE SERVICE**

*Many satisfied customers in the village*

**Telephone: 01638 662119**

## ANTIQUES

Antiques purchased for cash  
top prices paid - also a professional  
and discreet House & Barn clearing Service

Ring Mick on 01638 554382

## Experienced Sage Accounts Operative/Book Keeper

Moulton Based.Flexible

Reasonable Rates to suit requirements

Vat Returns Submissions; Spread Sheets; .Credit  
Control Services.etc

Available to work from home or local Office.

Please contact :-

[judithknapman@btinternet.com](mailto:judithknapman@btinternet.com) 07836 311144

## CARPENTRY, JOINERY & PROPERTY MAINTENANCE

### D & S

**Anthony Dobson & Mark Smith**

**07958 232787 • 07717 744984**

**[info@dandscarpentry.co.uk](mailto:info@dandscarpentry.co.uk)**

**Information & Free quotations**

# Moulton Village Hall

---

## Management Committee Officers

Chairman	Richard Marshall	750488
Deputy Chairman	Dale Burch	552055
Treasurer	Jerry Goodwin	551851
Bookings/Secretary	Jill Goodwin	551851

Jill Goodwin is responsible for taking bookings. To make bookings, or make enquiries about the hall, please contact Jill on 01638 551851 or e-mail:

[bookingsMVH@moultonsuffolk.co.uk](mailto:bookingsMVH@moultonsuffolk.co.uk)

If you are interested in joining a group or activity, set out below are the names and contact details you will require:

---

DAY	CLASS	TIME	CONTACT	TEL
Monday	Pre-School	09:15	Pauline Paines	07905 786303
Tuesday	Healthy Walkers	10:00	Ron Wallwork	01638 751869
Tuesday	Cubs/Beavers/Scouts	18.00	Geraldine Law	01638 750845
Tuesday	Moulton Minis	10:00	Vanessa	07725 103264
Wednesday	Duplicate Bridge	15:00	John Derry	01638 55280
Wednesday	Pre-School	09:15	Pauline Paines	07905 786303
Wednesday	Dog Training	19:00	Sue Hough	07836 624684
Thursday	Pilates	09:15	Alison Wilson	07752 360839
Thursday	Upholstery	10:30	Danny Niven	07840 777053
Thursday	Bridge club	14:00	Graham Burford	01638 661642
Thursday	Badminton	20:00	Yvonne Slater	01638 750547
Friday	Pre-School	09:15	Pauline Paines	07905 786303
Friday	Hip Hop Work Out	18:00	Nikki Hayes	01638 751208
Friday	Youth Club (2wkly)	19:15	Lara Briggs	01638 551835
Friday	Carpet Bowls	19:15	Dick Marshall	01638 750488
Saturday	Dance studio	08:30	Rachel Glen	
Saturday	Panthers Football	10:00	Nicola Talbot	01638 552358
Sunday	Panthers	10:00	Steve Wilson	07538 241521
Sunday	Veterans	10:00	Steve Wilson	07538 241521

---

# Telephone Directory

## MEDICAL

Addenbrookes Hospital	01223 245151
Newmarket Hospital	01638 558400
West Suffolk Hospital	01284 713000
Oakfield Surgery	01638 662018
Orchard House Surgery	01638 666887
Rookery Medical Centre	01638 664338

## NEWMARKET

All Saints Church (Rev Max Osborne)	01638 662514
Catholic Church (Fr Simon Blakesley)	01638 662492
Citizens Advice Bureau	01638 665999
Day Centre	01638 664262
Dial-a-Ride	01638 608080
Library	01638 661216
Sports Centre	01638 662726

## LOCAL GOVERNMENT

Forest Heath District Council	01638 719000
Local County Councillor (Lisa Chambers)	01638 552716
Local District Councillor (James Lay)	01638
Moulton Parish Council (Bill Rampling – Chairman)	01638 552631
Moulton Parish Council Clerk (Lorraine Stone)	01638 720971

## MOULTON VILLAGE

Ash Tree Veterinary Surgery	01638 554477
Moulton Matters	01638 551851/552631
St Peters Church (Rev Stephen Mitchell)	01638 552630
The Packhorse Inn	01638 751818
Village Hall Bookings (Jill Goodwin)	01638 551851
Village Shop (Mick & Kathy)	01638 750242
Village Bulk Oil Ordering Scheme (Tony Franklin)	01638 552958
Village School (Naomi Snowdon – Head Teacher)	01638 750236
Village Website (John Scott)	01638 552820
Village Police Community Support Officer (Becky Simpson)	01284 774100

## TRAVEL

Newmarket Taxi Hire	01638 561561
Railtrack Enquiries	08457 484950
Stagecoach – Cambus	01223 423578

## EMERGENCY

FIRE (999)	01473 260589
Police (999)	
Ambulance (999)	

## NON EMERGENCY

Crimestoppers	0800 555111
Gas	0800 111999
Police – Non Emergency	101
Power	0800 7838838
Water	08457 145145

