



# Moulton Matters

**Packed with Village News**

**Spring 2017**

## INSIDE THIS ISSUE

Parish Council News

Church News

Race Night

Scouts & Beavers

Luncheon Club

Nordic Walking

Bingo Night

Owls in the Village

Football Club

Community Choir

Village Hall

Speed Watch

and lots more...



Find us online  
[moulton.onesuffolk](http://moulton.onesuffolk)

**Luncheon Club  
page 10**



**Moulton Matters - A quarterly publication  
edited by Lisa Rampling & Jill Goodwin**

## Contents

|            |                          |
|------------|--------------------------|
| Page 2     | Contents and Editorial   |
| Page 3     | Parish Council News      |
| Page 4/5/6 | Church News              |
| Page 6     | Oil Ordering Scheme      |
| Page 7     | Race Night               |
| Page 9     | Scouts                   |
| Page 11    | Shop news                |
| Page 13    | On the Road Again        |
| Page 15    | Moulton Wanderers        |
| Page 16    | Luncheon Club            |
| Page 17    | Nordic Walking           |
| Page 18    | Bingo & Moulton in Bloom |
| Page 20    | New Year's Eve           |
| Page 21    | Owls in the garden       |
| Page 22    | Veteran Football Club    |
| Page 23    | Letter                   |
| Page 24    | Community Choir          |
| Page 26    | Village Hall 200 Club    |
| Page 27    | Ash Tree Vets            |
| Page 28    | The Countryside Code     |
| Page 31    | Speed Watch              |
| Page 33    | Moulton Contacts         |
| Page 34    | RSPB events              |
| Page 35    | RSPB                     |
| Page 36    | County Councillor report |
| Page 37    | Trade Directory          |
| Page 38    | Village Hall User List   |
| Page 39    | Useful telephone numbers |



If you have an advertisement or an article you would like to submit for this newsletter we publish them quarterly. Please ensure that articles reach us by the **14th May, 14th August, 14th September** for distribution in the first week of the following month.

Lisa Ramping 552631 & Jill Goodwin 551851

From the Editors

A New Year - so we are trying a new front page designed by Mike Rampling and using village photographs taken by Lesley Nichols, our village photographer, to reflect the changing seasons. We would like to thank Joan Smeaton for the logo she kindly painted for us when we changed our previous format.

We would like to welcome our new Parish Priest, Rosemary and her family to the area and anyone else who has moved into our lovely village. We hope you will find lots to do and enjoy some wonderful walks as the weather improves.

As always there is lots going on in the village and plenty of opportunity for everyone to get involved with. If you are not keen on joining a club there is always our village 'clean up' and 'summer planting' day as well as Bingo, Race Night and Country and Western evenings. The village hall is usually fully booked with classes and from the 27<sup>th</sup> February will include a new Yoga class (see page 16). I am sure you will agree there is something for everyone.

We are always keen to receive news, articles and photos. We were delighted to receive the owl pictures from Tony O'Meara (see page 21). We would also like to have news from Farriers Grange as Julie Bonner is no longer able to keep us informed on what is going on at that part of the parish.

On a sad note we are aware that since our last edition in December there have been a few deaths in the village. Whilst we have not heard directly from the families we would like to offer our condolences. We do print brief obituaries if requested to do so.

Finally – in our last edition we included an article from UK Power Networks about an 'extra support service' in the event of a power cut. The contact number given was incorrect and we now understand it is 0800 31 169 9970 or email [psr@ukpowernetworks.co.uk](mailto:psr@ukpowernetworks.co.uk)

Lisa and Jill



## Parish Council News

### Spring Clean Up

The spring litter pick and tidy up morning is being held on March 25<sup>th</sup> starting at 10 am – 12 noon. Light refreshments will be provided to all volunteers. There will be tasks for all ages and abilities so please do come along and give up a couple of hours to keep the village neat and clean.

### Moulton in Bloom

I was really pleased when attending a meeting of our local Parish Councils to hear how other villages have been inspired by the floral displays in Moulton. I also hope that the new tree planting will add to the overall look of our wonderful village. I would like to thank Dorothy Bowes and her team of volunteers who are planning another planting day on Sunday 14<sup>th</sup> May between 10am and 12 noon. I am sure this year's summer flowers will be as lovely as last year.



### Footpaths

We have been told that work will start very soon on the extension to the footpath along School Road. This will make access to the school safer. In conjunction with Kentford Parish Council we are continuing to pressure the County Council to establish a safe walking route from Kentford to Moulton School. The long term aim is to have this paved into a proper footpath as finances become available.

### Governance Review

Forest Heath District Council are just starting a governance review which involves them looking at boundaries between parishes to ensure that they represent the best interest of residents. It is likely that our boundary at Kentford End will be altered to move all the new houses into Kentford Parish.

### Kennett Developments

Many of you will have seen in the press and in CB8 that there is a proposal to build a large development of between 500 and 1000 new houses opposite the primary school in Kennett. The Parish Council have looked at and considered the proposals. We believe that if the developers build this scale of development then the current road network is not sustainable as there is already gridlock of traffic at peak times at The Bell crossroads. In our opinion if this development goes ahead it must be accompanied by a link road between the A11 and A14 diverting the traffic out of Kennett and Kentford. We will continue to campaign for this.

### Speed Watch

As a result of the speed monitoring that has gone on over the six months or so the Police will be doing more speed enforcement checks through the village and will be issuing fines and endorsements. Please do keep your speed down and drive carefully. The Council continue to thank Tim James and the team of volunteers who go out in all weathers to monitor and report speeding vehicles.

### Luncheon Club

On the last Tuesday of every month at 1.00pm residents of all ages are invited to come and enjoy homemade soup, cakes and tea/coffee at the Village Hall for £2 per person. This is a great opportunity to meet new people and renew friendships. If you haven't already come down, do come along and taste some delicious food.

### 200 Club

Last chance to join the MVH 200 club by paying £26 subscription for an annual membership not only are you helping the village hall but you also have four chances a year to win a cash prize (see page 26).

### *Bill Rampling*

# *St Peters Church News*

---



## **Our New Year began with Good News.**

Following the Section 12 meeting last autumn with Bishop Martin Seeley an interview followed, and an appointment was made. Reverend Rosemary Ives Stewart Rycraft was duly Licensed and Installed as Priest in Charge of the Benefice of Dalham, Gazeley, Higham, Kentford and Moulton by the Rt. Revd. Martin Seeley, Bishop of St Edmundsbury & Ipswich and the Ven. Dr. David Jenkins Archdeacon of Sudbury.

All Saints' Church Gazeley was the venue and on Sunday January 29th the Procession entered at 3.30pm.

Our first hymn, 'O Praise ye the Lord! Praise him in the Height' set the atmosphere splendidly for this service of praise, commitment and community. The opening words were spoken by Bishop Martin.

"We have come together to give thanks for the life of the community in this place, and for all who have done God's work in it; and to pray for Rosemary, now to begin her ministry here, that she may have joy, courage and hope; and for ourselves, that we may be renewed in the work of God's kingdom.

Let us pray that the people of God in all the world may worship in spirit and in truth.

Lord, hear us, Lord graciously hear us".

His sermon was framed around the reading from Matthew's Gospel 2: v1-12 'Visit of the Magi' and he emphasised those gifts we receive from God and the gifts we can give to others. The benefice choir performed 'The Call' by Ralph Vaughan-Williams, then the Act of Commitment to Ministry began.

Some of the children from Moulton Primary School brought forward to the Bishop the elements of ministry. At certain intervals, each item was presented, particular words were read by the Bishop and responses made. The bible, Rosemary placed on the lectern, the water in the ewer was taken to the font, the bread and wine were placed on the altar, as was the oil. The bowl of water and the towel were placed near the Bishop. During this part of the service the Lay Chair of the Mildenhall Deanery, with Rural Dean John Hardy and the Archdeacon of Sudbury all contributed readings, or questions to Rosemary and

the congregation. The children, guided by Mrs Shipp and Mrs Gilmore, showed a caring thoughtfulness during a hugely significant occasion.

There followed the Licensing, the Declaration of Assent, the Oath of Allegiance to the Queen, and the Oath of Canonical Obedience. The Archdeacon installed our new priest with these words,

“Rosemary, as I place you in this stall, accept with joy your new commission to preach the living word of God, to administer the Sacraments of eternal life, and to guard and strengthen the flock that has been committed to your charge. May God keep you in his care, may Christ empower you with his love, and may the Holy Spirit lead you in the ways of truth and peace, this day and for evermore”. Amen.

Representatives from the local churches and communities were then introduced to Rosemary to welcome her as our new Priest in Charge. We sang the fifth and final hymn, then joined the many who shared in a delightful afternoon tea in Gazeley Village Hall. We are very grateful to Lesley Nichols for the photographs of the Licensing Service.

Reverend Rosemary Rycraft can be contacted at The Vicarage, The Street, Gazeley CB8 8RB.

Telephone 01638 750783                      email rosemaryrycraft121@gmail.com

After Rosemary's first Family Service at Moulton on February 5th we gave her a card entitled 'New Beginnings' with these words for us all -

"A variety of people worship at St Peter's, others visit church for private prayer, come to the churchyard, walk along the pathways, support our fund-raising events, help with flower arranging, cleaning, strimming, clock-winding, bell-ringing. Some join the festival services at Christmas and Easter, or come for family reasons, Baptisms, Weddings or Funerals. Other Friends of St Peter's use their expertise, time and energy to assist with the upkeep and maintenance, some give financial support, or contribute to the Church Floodlighting Scheme.

On behalf of everyone,                      'Welcome Rosemary'.                      We look forward to this new year".

Why not come and meet her at one of our services between now and Easter.

## Worship Diary Dates 2017

|                 |               |         |  |
|-----------------|---------------|---------|--|
| <b>February</b> | Sunday 19th   | 10.30am | Holy Communion at Moulton St Peter's           |
|                 |               | 6.00pm  | Holy Communion at Kentford St Mary's           |
|                 | Sunday 26th   | 10.30am | Benefice Holy Communion at Gazeley All Saints' |
|                 | Sunday 5th    | 9.15am  | Holy Communion at Higham St Stephen's          |
|                 |               | 10.30am | Family Service Moulton                         |
|                 |               | 6.00pm  | Evensong Kentford                              |
|                 | Sunday 12th   | 9.00am  | Holy Communion at Dalham                       |
|                 |               | 10.30am | Holy Communion at Gazeley                      |
|                 | Sunday 19th   | 10.30am | Holy Communion at Moulton                      |
|                 |               | 6.00pm  | Holy Communion at Kentford                     |
|                 | Sunday 26th   |         | Mothering Sunday                               |
|                 |               | 10.30am | Benefice Communion at Kentford                 |
| <b>April</b>    | Sunday 2nd    | 9.15am  | Holy Communion at Higham                       |
|                 |               | 10.30am | Family Service Moulton                         |
|                 |               | 6.00pm  | Evensong Kentford                              |
|                 | Sunday 9th    |         | Palm Sunday                                    |
|                 |               | 9.00am  | Holy Communion at Dalham                       |
|                 |               | 10.30am | Holy Communion at Gazeley                      |
|                 | Thursday 13th |         | Maundy Thursday                                |
|                 |               | 10.00am | Holy Communion Moulton                         |

|             |         |                                |
|-------------|---------|--------------------------------|
|             | 7.30pm  | Holy Communion Gazeley         |
| Friday 14th |         | Good Friday                    |
|             | 2.00pm  | Last Hour Meditation Dalham    |
| Sunday 16th |         | Easter Day                     |
|             | 9.15am  | Holy Communion Higham          |
|             | 10.30am | Holy Communion Moulton         |
| Sunday 23rd | 9.00am  | Holy Communion at Dalham       |
|             | 10.30am | Morning Praise for All Gazeley |
| Sunday 30th | 10.30am | Benefice Communion Higham      |

Early Notice: The 2017 Annual General Meeting of St Peter's Church Moulton Parochial Church Council will be on Wednesday 19th April at 7.30pm in the church. You are very welcome to join us.

We will be reviewing a very successful year for St Peter's Church, not least the completion of the Toilet and small kitchen area newly installed in the tower. The very generous support from everyone made this possible. The Harvest Supper raised £786.20, the Christmas Fair - £1214.75. including sales of the Moulton Calendar. The improved facilities in church have been greatly admired and well used. The 'Traditional Jazz Evening' in December just one example of new community use.

The surprise item to start 2017 was the successful bid for a grant towards the cost of installing Roof Alarms on St Peter's Church. The Suffolk Historic Churches Trust has enabled many PCC's with 50/50 funding to protect their lead roofing that attracts unscrupulous types anxious to convert their ill-gotten gain into cash.

We are always grateful to the friends of St Peter's who keep a 'weather eye' on our sacred building. If you notice anything untoward at any time please let us know. Thank you.

Anne Garmston 01638 751188 Bob Saltmarsh 01638 750190

## OvenGleamers Cambridge East

### The specialist AGA, Range, Oven & BBQ cleaners



**"I don't just clean it,  
I GLEAM it"**

**A Haverhill based company, call Mark Brown on  
01223 750707 or 07984 490715**

Moulton Village Hall & St Peter's Church

# Race Night with Curry Supper



**Saturday 22nd April**

**Moulton Village Hall**

**7 pm - 11 pm**

**Zayana and Dorothy will be  
cooking up a winning supper !**

Non curry eaters and/or vegetarians contact Lisa on 01638 552631 for alternative supper

Tickets **£12** must be pre-purchased – buy and name a horse **£5**

Tickets & horses available from Moulton Shop

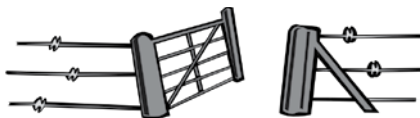
Pay Bar

Raffle

Tote winnings



## Threlfall Contracts



**FOR**  
**Garden maintenance**  
**Paddock and Domestic Fencing**  
**Hedge Cutting and Planting**  
**Chain saw work**  
**Tree Pruning**  
**Other work can be undertaken**

Contact Bruce  
On  
07876254962 or 01638 507623

## MOULTON PET SITTERS

FOR PETS WHO LIKE THEIR  
HOME COMFORTS

DOGS TO STAY IN OUR HOUSE WITH  
US OR WE CAN STAY IN THEIR HOME  
DOG WALKING / CHECKING YOUR  
PETS AT HOME WHILST YOU ARE AWAY

Contact: John & Jackie Chapman  
(01638) 454881  
Fully insured pet sitters

[www.moultonpetsitters.co.uk](http://www.moultonpetsitters.co.uk)

# Pilates

at Moulton Village Hall

Thursdays 9:15 - 10:15 am

### Benefits of Pilates

- Strengthens and Tones Muscles
- Reduces Stress/Tension and Boosts Energy
  - Creates a Stronger Back and a more Flexible Spine
- Offers Relief from Back Pain and Joint Stress
- Improves the way your Body Looks and Feels

For more information call Alison on:

01638 507784 or 07752 360839

e-mail: [alisonwilson6@hotmail.co.uk](mailto:alisonwilson6@hotmail.co.uk)

Pilates and Zumba classes also held in  
Newmarket and Stetchworth

**All ages and abilities welcome**

## Suffolk Maids

*The Housekeeper Register*

### Domestic Cleaning & Ironing Service

At Suffolk Maids we maintain a fast growing register of reliable local housekeepers who offer cleaning and ironing services to private homes.

### Personal Housekeeper

### Unique Security System

### Fully Insured

All for less than £9.75 per hour.

For further information please call:  
**0844 544 9905**

or visit our website at:  
[www.suffolkmaids.co.uk](http://www.suffolkmaids.co.uk)



# 1<sup>st</sup> Moulton Scout Group



The 1st Moulton Scout Group provides a very wide range of activities for the young people in Moulton and surrounding villages. The group consists of Beavers, Cubs and Scouts with ages ranging from 6 to 14 years with about 60 youngsters and leaders involved. The Beaver section is currently looking for a new leader to assist with organising and running short activity sessions with the 6 to 8-year-old Beavers on Tuesday nights at Moulton Village hall. The Scout Association provides training and uniform and there is help and guidance from the current leaders to guide any new leader. It's a good social role with some great satisfaction to be gained from being involved.

If you think you may be interested and can offer a couple of hours per week to help, then please let us know. Your age is irrelevant to us, as are your skills. If you know anyone, young or old that could help we would be very happy to talk to them.

Contact me on 07799091054 or [stephen.mablesen@hotmail.co.uk](mailto:stephen.mablesen@hotmail.co.uk)



## Meeting of like minds!!

Do you like drawing and painting or doing a creative craft. Do you enjoy the company of like people?

Would you come along to the Village Hall in Moulton one afternoon a week?

Then contact two Moultonians who enjoy putting brush to paper and would like to create an Art and Craft Group within the village.

**Contact Hazel 750936 or Joan 75111**

**R. Marshall**

MCIPHE RP

**Heating and  
Plumbing Engineer  
Builder**

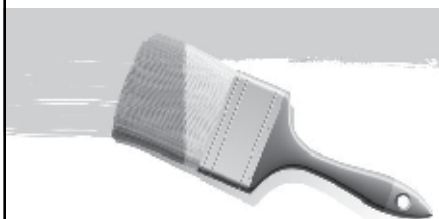
**9A Chippenham Road  
Moulton  
CB8 8SN**

**Tel: 01638 750488**

**Mobile: 07985 303958**

**DALE BURCH&SON**  
**Decorators**

**All aspects of Interior  
&  
Exterior Decorating**



**Established over 25 years  
Free estimates**

**Call 01638 552055**

**NU PLAN**  
**Builders** est. 1978

**B A Jones**

**G Jones**

45 Edinburgh Road  
Newmarket Suffolk CB8 0QE  
01638 751176  
07734 795381 07734 795382  
info@nu-planbuilders.com  
www.nu-planbuilders.com



# Shop and Post Office News

---

Mike & I want to say “Thank you” to all our customers who continue to place orders with us at Christmas for Turkeys/ Hams/Bread/Fruit & Veg etc. From the feedback we have been given everyone seems happy with the orders they received, another successful year!



On 1st March 2017 we will be embarking on our 11th year running the shop & Post Office. We have gone through a lot of changes in the previous 10 years, but we like to think that the changes have been seen as improvements as we strive to enhance our business. We are keen to listen to our customers & hope by doing so we can provide you with the service that meets your wishes.

Thanks to all the team who work for us (not forgetting were Haribo!) who overall mostly make us laugh, with only the occasional tear! It wouldn't be “The Best Shop in Moulton” without you all



Mike & Kathy Dillon

# **A1CARS**

(SUFFOLK) LTD

**24 hour Taxi, Executive and Coach Service**

Reliability, punctuality, safely,  
comfortably and on time serving  
Bury St Edmunds and  
surrounding villages



**COACH & MINI BUS  
AIRPORT TRANSFERS  
EXECUTIVE SERVICES**

**T: 01284 766777  
E: [book@a1cars.co.uk](mailto:book@a1cars.co.uk)  
[www.a1cars.co.uk](http://www.a1cars.co.uk)**



## **RUMBLES FISH BAR**

**14 High Street, Newmarket (Opposite the Clocktower)**

**Enormous menu selection**

**Generous portions!**

**Top quality food & Friendly Service**

**Tel: 01638 660094**

**Sunday to Thursday 12am to 11pm  
Friday/Saturday 11am to 11pm**

# ON THE ROAD AGAIN

*Country Music*

**Moulton Village Hall**  
**Saturday 11th March 2017**



**£10**

*inc. Fish & Chips!*



**Doors open 7.00pm**  
**Music from 7.30pm**

**Tickets available**  
**from Moulton Shop**  
**or**

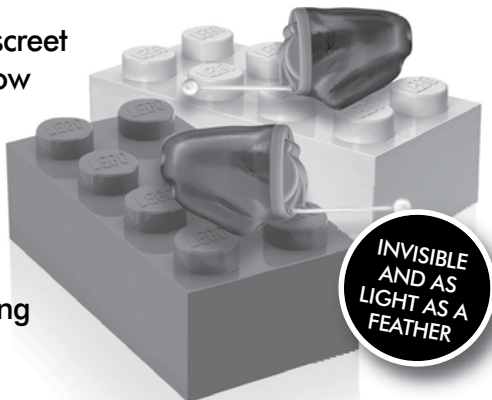
**Bob Saltmarsh**  
**01638 750190**

**In aid of St Peter's Church, Moulton**



# The Latest 'Invisible' hearing technology

Ask us about the latest, discreet digital hearing aids and how they can improve your confidence as well as your quality of life. Our exceptional service & aftercare ensures you will receive the very best hearing healthcare possible.



## Warning!

Cotton buds can cause damage to your ears

We offer Microsuction - a safe, gentle and effective ear wax removal treatment to remove excessive or impacted wax.

**CALL US TODAY ON 01223 661399**



## angliEAR

Hearing & Tinnitus Solutions

Hear Your Life

**GO Local. GO Independent. BE Happy!**

Suite 3 Grain House, Mill Court, Great Shelford, Cambridgeshire, CB22 5LD

T: 01223 661399 • [info@angliearhearing.co.uk](mailto:info@angliearhearing.co.uk)

[www.angliearhearing.co.uk](http://www.angliearhearing.co.uk)



## Moulton Walking Scene

Thirty-nine people walked with Moulton Wanderers in 2016 and between them they covered more than 2,250 miles around Moulton, Gazeley, Cheveley, Barrow and Kings Forest. Two walked in excess of 150 miles and ten over a hundred.



*Moulton Wanderers at the Kings Forrest on 10<sup>th</sup> January 2017*

Regular Wanderer Keith Humphrey (2<sup>nd</sup> from the right) who travels from Haverhill every week is member of *Jazz Inc.*, a traditional jazz band, who kindly gave of their services at St.Peter's Church on 17<sup>th</sup> December for an end of year social which went off well and raised £150 for the church.

*The Moulton Wanderers* continue to meet at the Village Hall at 10am on Tuesdays as does the warm welcome to any newcomers.

The walks vary in distance depending on the ability of the walkers who turns up and newcomers are advised to contact Ron Wallwork prior to their first walk. It costs nothing to walk with the group.

**Diary Date:** The **Annual Moulton Walks** are scheduled to take place on Saturday 3<sup>rd</sup> June this year. The senior event is over 5 miles and the challenges are: a) walk the five miles and b) for those with a competitive nature, walk it inside the hour. More details in next issue of Moulton Matters.

Walking because it is a low impact activity (ie. easy on the joints), is a wonderful way to socialise and keep fit. Moulton is fortunate; it is situated in beautiful walking country and in addition to numerous dog walkers has three formal groups that operate within the village.

**Race and Nordic walking** are ideal for people who want to get really fit and who enjoy a challenge.

---

Anyone requiring further information about Moulton Wanderers, Race or Nordic Walking, don't hesitate to get in touch with: me Ron Wallwork on 01638 751869 or [ronc893moulton@gmail.com](mailto:ronc893moulton@gmail.com)



# Luncheon Club

On the last Tuesday of each month a group of us prepare homemade soup, cakes and tea/coffee. Please do come along and join us.

We meet at 1pm until 3pm and the cost is only £2 per person.

If you have any problems with transport please let me know and we will try to arrange a lift.

Lisa Rampling 552631



## Yoga Classes

at Moulton Village Hall

Mondays 7-8pm

**First Class FREE**

**Drop-in: £7**

**5 Class Pass: £30**



- Beginner-Intermediate level
- Gentle, but strengthening Hatha style Yoga
- Traditional & Complete practice including: Asana, Pranayama (Breathing Techniques), Meditation and Relaxation
- Start off your week with positive and calming vibes!
- Please bring a mat and a warm jumper/blanket for relaxation

Contact Bridget on 07758540739 for further information, or visit the 'Ramjhula Yoga' Facebook Page.

ROLAND'S  
GARDEN CARE

Covering Moulton  
& surrounding area

Contact Roland for a  
free quotation

07761 533105

roland@rolandsgardencare.co.uk  
www.rolandsgardencare.co.uk

# Nordic Walking

## East Anglia

### **Nordic Walking: Fitness for all**

As the days get longer and we head into spring, what better reason to start making the most of the great outdoors than sporting poles whilst out walking. Far from being walking aids, these poles signify that the energetic users are early adopters of the UK's fastest growing sport: Nordic Walking.

Nordic Walking derives from cross country skiing and is an effective total body work out that can be enjoyed by anyone regardless of age, gender, fitness, ability, or size. If you walk you can Nordic Walk. The correct use of the poles switches on the large upper body muscles, muscles which are often overlooked, thus increasing cardio-vascular output; toning upper arms and waist; reducing neck and shoulder tension; improving posture; as well as increasing the number of calories burned, thus aiding weight loss. The poles also turn the participant into a four legged animal, which vastly reduces the impact on ankles, knees and hips, making this a gentle, albeit affective, form of exercise. Studies have proven a reduction in risk of type 2 diabetes, heart disease, and a lowering of the blood pressure by people who regularly engage in Nordic Walking.



Mary Tweed and Katharine Green, of Nordic Walking East Anglia, teach the internationally recognized British Nordic Walking ten step technique over courses in the Clare and Bury St Edmunds areas. Participants progress through the course until they have mastered the basics, at which point balance, strength and cardio-vascular exercises are introduced. Classes are fun and sociable and give walkers the opportunity to make the most of exercising in the fresh air. Mary and Katharine supply poles, so walkers simply need to turn up wearing comfortable clothes and a good pair of

walking shoes. If your ambition is to improve your health and fitness, then please get in contact; either email [info@nordicwalkingeastanglia.co.uk](mailto:info@nordicwalkingeastanglia.co.uk) or call Mary on 07931 580648 or Katharine on 07789 872435 to find out more.



Saturday 8th April 2017      Doors open at 7.00 pm  
Moulton Village Hall

Spring into an enjoyable evening of Bingo – lots of prizes - **£50 JACKPOT!**

With Mick - Moulton's favourite Bingo Caller !!

**Pay Bar**

**Raffle**

Adults £3    Children £2    Bingo game books on sale £2 each



## **Moulton In Bloom**

**Sunday 14<sup>th</sup> May    10am – 12.00 noon**

Come along to the Village Hall and help with planting the summer flowers around the village.    Please bring a trowel and watering can.

If you would like to make a donation towards the flowers please contact Jill Goodwin on 551851.

Tea and coffee provided.



## **Carpet Cleaning & Stone Floor, Upholstery, Rugs**

*A few points that make us stand out,*

Rothwell's has been in business since 1993

We're an honest local family firm.

Our large truck mounted machines mean more cleaning & drying power for the best results possible.

Members of both the NCCA and TACCA.

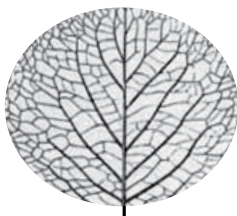
We will move the furniture.

100% satisfaction or it's FREE.

*Call Oliver and Max Campbell for expert help today.*

**01638 428 060**

**www.Rothwells.biz**




**napier**  
GARDEN | PLANNING

WE OFFER A PROFESSIONAL & RELIABLE SERVICE FROM LAWN MOWING TO NEW PLANTING PROJECTS

•

OTHER SERVICES INCLUDE  
TREE SURGERY & HEDGE CUTTING

Please telephone Zara or Francis at  
**01638 508 847**  
or email us: **napierfz@aol.com**  
Westley Waterless, Newmarket



## **Advertising Rates**

|                 |  |
|-----------------|--|
| Trade Directory | £30 for 4 issues                       |
| 1/4 page        | £12.50 per issue<br>(£50 per 4 issues) |
| 1/2 page        | £17.50 per issue<br>(£70 per 4 issues) |
| Full page       | £30 per issue<br>(£110 for 4 issues)   |

**\*Only ads for 4 issues accepted.**

For more information please contact  
Lisa Rampling 552631 [elissa.rampling@gmail.com](mailto:elissa.rampling@gmail.com)  
Jill Goodwin 551851 [jerryjill99@hotmail.com](mailto:jerryjill99@hotmail.com)

## **COURT NEWS**

*Delivering News to your door*

### **We deliver!**

Newspapers & Magazines  
to MOULTON



**If you would like more information or to place an order please telephone**

**01284 702 447**

## New Year's Eve at the Hall!

# Wow! What a party!

The New Year's Eve party organised by the Moulton Village Hall Management Committee will go down in village history for two reasons:

### **1 It was the Best New Year's Eve party in the new hall.**

D J Ron played soft background music whilst guests were served their mozzarella and tomato salad followed by a hot roast pork dinner. At this point Jill introduced the evenings singing sensation – Neneth.

She began the first of her two performances singing some low beat well known songs which gave guests the opportunity to eat their desserts and drink their coffee listening to the dulcet tones of Nen's beautiful voice. Neneth then turned the tempo up and people were soon on the dance floor. After over an hour of singing Neneth took a break and the DJ played some great dance songs to keep everyone on their feet dancing. There were lots of raffle prizes won in the interval and then at 10:45 pm Neneth began her second session. We were all mesmerised by her renditions of Whitney Huston's I will always Love You and Somewhere from West Side Story. Those on and off the dance floor were singing along. As 12 midnight approached everyone was on the dance floor to see in the New Year and the party went on until 12.30 am. Everyone agreed that the entertainment had been first class and Neneth's performances had been stunning.

### **2 With only 43 tickets sold it was a really disappointing turnout especially as it was raising money for the Village Hall.**

The event made a profit of £120 thanks to the generous donations of raffle prizes by the hall's user groups.



## Barn Owl photos – Antony O'Meara

Antony and Linda O'Meara were working in their garden in Maltings Close recently when they noticed a large bird flying in the field next to their bungalow.

Tony said that at first they were not sure what the bird was as they see a lot of different birds around the garden and field behind them. The bird landed onto one of the fence posts and then continued to fly up and down the field. As it continued to fly around it was getting nearer to where they were. Eventually the barn owl flew towards Tony and landed on a fence post nearby and he was able to take these stunning photos.

Discover 12 fascinating facts about the beautiful barn owl.

1 The barn owl was voted Britain's favourite farmland bird by the public in an RSPB poll in July 2007.

2 Historically, the barn owl was Britain's most common owl species, but today only one farm in about 75 can boast a barn owl nest.

3 Barn owls screech, not hoot (that's tawny owls). To hear the cry of the barn owl, and other British owls, visit the Barn Owl Trust website.

4 The barn owl can fly almost silently. This enables it to hear the slightest sounds made by its rodent prey hidden in deep vegetation while it's flying up to three metres overhead.

5 The barn owl's heart-shaped face collects sound in the same way as human ears. Its hearing is the most sensitive of any creature tested.

6 Barn owls are non-territorial. Adults live in overlapping home ranges, each one covering approximately 5,000 hectares. That's a staggering 12,500 acres or 7,100 football pitches!

7 It's not uncommon for barn owl chicks in the nest to feed each other. This behaviour is incredibly rare in birds.

8 In order to live and breed, a pair of barn owls needs to eat around 5,000 prey items a year. These are mainly field voles, wood mice, and common shrews.

9 Though barn owls are capable of producing three broods of five to seven young each year, most breed only once and produce, on average, only two and a half young. 29 per cent of nests produce no young at all.

10 91 per cent of barn owls post-mortemed were found to contain rat poison. Some owls die as a direct result of consuming rodenticides, but most contain sub-lethal doses. The effects of this remain unknown.

11 In a typical year, around 3,000 juvenile barn owls are killed on Britain's motorways, dual carriageways and other trunk roads. That's about a third of all the young that fledge.

12 Everyone can help barn owls. Leave a patch of rough grassland to grow wild thus creating habitat for voles, erect a super-safe deep nest box, volunteer for your local barn owl group, switch to non-toxic rodent control and support charities working to conserve the barn owl.





# **Moulton Veterans 2016-2017**

## **Mid Season Update**

### **Moulton Vets have a new Manager – Pete Saunders & Asst. Manager Ian Spinks!**

Our season got off to a winning start in the League after a couple of friendly (in name only) 3-3 draws v Newmarket & West Wrattling.

On November 11th 20 players left Moulton on their first international tour to Dusseldorf to play against a Dusseldorf select team of chefs & waiters and lost 3-2 with the winning goal scored by a 68 year old Mr Miagi lookalike who lobbed our 6'3" goalkeeper from 35 yards!

The Tour was great fun where we all learnt from Peter May that a tram goes underground in Dusseldorf, meeting at the Irish Pub was anywhere in the Town Centre & I will wait for you in Dunkirk meant checking in for a cancelled Ferry, whilst everyone else caught the next sailing out of Calais!



Our Cup runs were cut short on our return (nothing to do with our Tour!) before the Winter break with defeats in the Suffolk and Cambs League Cup.

The New Year got off to a winning start with a victory over Cheveley in the Inter Village County Cup, followed by wins against Studlands and Ridgeons.

Next up are Cambridge Ambassadors on Sun 26th Feb 1.30pm KO where another win could take us Top of the Table.



## Moulton Veterans continued.

### Upcoming Events

Pete Saunders is 60 years young and can be found @ The Affleck on Friday 10th March from 7.30pm

Dorchester Tour 22nd & 23rd April 2017

Mark Price - Moulton Veterans - 07954 362822

| Division 2                     | P | W | D | L | F  | A  | Pts |
|--------------------------------|---|---|---|---|----|----|-----|
| Linton Aztecs Veterans         | 4 | 3 | 0 | 1 | 20 | 10 | 9   |
| Great Chesterford Veterans     | 3 | 3 | 0 | 0 | 11 | 2  | 9   |
| Moulton Veterans               | 3 | 3 | 0 | 0 | 14 | 6  | 9   |
| Barton Veterans                | 4 | 3 | 0 | 1 | 16 | 9  | 9   |
| Cambridge Ambassadors Veterans | 5 | 1 | 1 | 3 | 6  | 9  | 4   |
| Cambridge Cosmos Veterans      | 4 | 1 | 0 | 3 | 3  | 9  | 3   |
| Kennett Veterans               | 3 | 1 | 0 | 2 | 4  | 11 | 3   |
| Ridgeons Veterans              | 5 | 1 | 0 | 4 | 10 | 21 | 3   |
| Whittlesford Warriors Veterans | 3 | 0 | 1 | 2 | 4  | 11 | 1   |

## Thank you letter from Joan Smeaton

Dear Jill

*If you have room in your next edition of Moulton Matters would you please thank the lovely people of the village and the neighbourhood for all their best wishes, cards, phone calls tasty homemade suppers and above all HELP with all the things I was unable to do for myself.*

*The shop, Mils and Cathy and their kind staff making sure I had all my necessities by delivering them to my door. And last but not least my wonderful dog walkers who made sure that Winnie had her exercise and was still able to see her doggy friends.*

*When you are a stubborn old fool like me who had an argument with a dustbin on a dark wet evening and ended up in Addenbrookes for 2 weeks just before Christmas you couldn't live in a friendlier village than Moulton! I did have excellent professional carers who helped me to gain my independence once more but the friends and neighbours were the back bone to my recovery.*

*Thank you and God Bless*

*Joan Smeaton*

## Moulton Community Choir - Spring 2017

The uplifting Open Door Advent Carol service at St Etheldreda's church on December 5th was well attended and our new piece the appropriately named Open Door Carol composed by one of our choir members Catherine Teale was much appreciated. We also sang the ever popular Streets of London by Ralph MacTell.

Our annual carol singing evening at the cosy surroundings of the Afleck Arms in Dalham played to a packed house literally! The pub's regular patrons and landlady Jackie joined in with gusto as the carols and festive songs were sung and we all enjoyed the mulled wine and mince pies afterwards

Some of our members also sang at the beautifully decorated Ashley Church during their Christmas tree and flower festival weekend. The welcome was very warm although the slightly lower ambient temperature in the church required us to keep our coats on during the performance. The accompanist's piano accordion managed to wheeze its way through some of the carols, but had to be replaced by recorder accompaniment as the temperature dropped and the bellows seized up! The delightful small children in the audience were then invited up to lead us in a rendition of the old favourite Away in a Manger, their initial shyness being overcome by the provision/bribe of a multitude of small percussion instruments for them to enthusiastically shake and bang!

Tattersalls Sale ring provided another great venue for the Rotary Club's Charity carol service in December. Our rather eccentric choreographed interpretation of the Christmas song Sleigh Bells was augmented by choir members wearing reindeer antlers, angel halos and wings, elf hats, twinkling fairy lights, and tinsel boas. Judith Fisher our choir director and conductor tried to keep some semblance of order with the aid of a purple tinsel embellished driving whip, but the addition of a decorated hobby horse and a very scary, some might say deranged, bell ringing Father Christmas, proved to be a severe test of her authority! The audience and members of Newmarket Town Band loved it though and much unintentional hilarity ensued throughout the performance!

We have been delighted that Judith Fisher our first musical director has been able to return during term time on alternate Tuesdays evenings to arrange our future repertoire for this year and share her expertise in vocal technique and performance.

The choir has been invited to perform at the joint festival of Choirs in St Mary's Church Newmarket on Saturday June 10th. We will also be holding our annual "Songs for a Summer's Evening" Concert in St Peter's Church Moulton early in July.

Our repertoire for 2017 will include songs from The Roaring 20s, uplifting Spirituals, A Flanders and Swann medley, Songs from the 70s, A Barbara Streisand love song, and Sam Smith's latest Bond theme song Writing's on the Wall.

The choir continues to practise and rehearse each Tuesday from

6-45 pm to 8-15 pm in Moulton Primary School.

We are always ready to welcome new members and

for further information about joining or booking the choir please contact

**Marian Brown** on **01638 5529** or email [music@thebrownfamily.biz](mailto:music@thebrownfamily.biz)



**3 PANE ALUMINIUM  
BIFOLD DOORS  
IN WHITE,  
GREY OR BLACK  
ONLY**

**£2685**

**INCL VAT & INSTALLATION**

**NOW MANUFACTURED IN OUR FACTORY IN IPSWICH  
SPECIALISING IN ALUMINIUM PRODUCTS**



**Back doors  
£550**



**Front doors  
£650**



**Composite doors  
£895**



**French doors  
£975**

**All doors include VAT & installation**



**15% OFF  
ALL 'A'  
RATED  
WINDOWS**



**CONSERVATORIES  
DESIGNED  
FOR YOUR  
INDIVIDUAL  
REQUIREMENTS**

**e: [sales@micronwindows.com](mailto:sales@micronwindows.com)  
Unit 5, Acorn Business Centre  
Oaks Drive, Newmarket, Suffolk.  
Tel: 01638 751122**



**micron**  
windows doors & conservatories

**OPEN:  
MON-FRI  
9AM-5PM**

**MOULTON VILLAGE HALL 200 CLUB 2017** (Registered Charity No. 1002083)

As you are aware, the village has a fantastic village hall which is in use more than ever before and it has become a focal point of the village. Although the hall is up and running, we still need funds for maintenance and improvements. The 200 Club is a great way to assist in helping to raise the funds required, whilst giving you a chance to win some cash back for yourselves. This year we had 100 subscribers raising over £1,000 towards the hall.

During 2017 there will be four draws – Spring, Summer, Autumn and Christmas. Our last draw for 2016 will be at the Christmas Fayre. For a subscription of £26 a year (that’s just 50p a week), each subscriber has the chance to win cash prizes; the more subscriptions taken up, the larger the cash prizes! So please join us – new members are very welcome – by completing the form below and returning it to us.

Jackie Chapman – Organiser  
Paul Varley - Treasurer

Please enrol me as a member of the MVH 200 Club for the year beginning 5<sup>th</sup> January 2017. Members must be over the age of 16.

I wish to purchase ..... Subscription(s) @ £26 each

Name: .....

Address: .....

Post Code ..... Telephone No. ....

E.mail Address: .....

Second Subscriber

Name: .....

Address: .....

Post Code ..... Telephone No: .....

I enclose a cheque or cash made payable to “MVH 200 Club”

For £..... for ..... Subscription(s) @ £26 each

Please send to:

Jackie Chapman – Organiser - 3 St Peters Avenue, Moulton CB8 8SE (Tel: (01638) 454881)

Paul Varley – Treasurer - 11 Dalham Road, Moulton CB8 8SB (Tel: (01638) 751870)

Please return your application form as early as possible. **Cheques can be dated 1<sup>st</sup> March 2017.**

The rules - (As before but changing to 2017).



# Ash Tree Veterinary Centre



E: [enquiries@ashtreevets.com](mailto:enquiries@ashtreevets.com)  
W: [www.ashtreevets.com](http://www.ashtreevets.com)

Ash Tree Veterinary Centre  
6 Pilgrim Court, Kennett  
Newmarket CB8 8FA



- Brand new purpose built high quality veterinary surgery
- FREE healthy pet check with registration
- Complete professional and friendly service from preventative care to diagnostics and surgery
- LARGE free car park

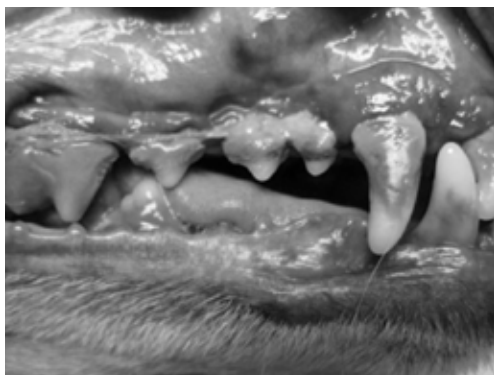
Call now to book your appointment

**01638 554477**

## Did you know your pets need to see the dentist too?

Dental disease is not just a cosmetic issue. Red gums, yellow teeth and bad breath can be a sign of serious oral disease which, left untreated, can cause infection and pain, seriously impacting your pet's quality of life. Bacteria from the mouth can even enter the blood stream, causing damage to vital organs such as the kidneys, liver and heart.

Your dog's and cat's teeth develop a build-up of plaque just like ours do. When plaque isn't brushed away, it hardens and forms tartar which, if not treated, can cause gingivitis (inflammation of the gums).



The good news is that the majority of dental problems are treatable, and nearly all are preventable.

During February and March we are focusing on oral care at Ash Tree Vets, offering information and advice, alongside some exciting special offers.

Free Dental checks with one of our Vets

**10% off all dental treatment\***

**10% off preventative dental products\***

(\*PLUS an additional 10% off if you are already a member of our Healthcare Plan)

**Call us on 01638 554477 to make an appointment**

## The Countryside Code

After an horrific incident recently when a dog killed some sheep (not in our village thankfully) one of our readers suggested we remind everyone about the Countryside Code. We all love our dogs and think they will never do any harm to animals or anyone, but sadly that is not the case.

**We are just starting lambing time in the village and it's such a wonderful sight to see the ewes and lambs in the meadows. Children especially always love to see the lambs. So please....keep them safe and keep your dog on a lead.**

We all have a responsibility to protect the countryside now and for future generations, so make sure you don't harm animals, birds, plants or trees and try to leave no trace of your visit. When out with your dog make sure it is not a danger or nuisance to farm animals, horses, ponies, donkeys, wildlife or other people

- keep your dog on a lead, or
- keep it in sight at all times, be aware of what it's doing and be confident it will return to you promptly on command
- ensure it does not stray off the path or area where you have a right of access

It's always good practice (and a legal requirement on 'open access' land) to keep your dog on a lead around farm animals and horses, for your own safety and for the welfare of the animals. A farmer may shoot a dog which is attacking or chasing farm animals without being liable to compensate the dog's owner. A court could also decide that your dog is dangerously out of control if either of the following apply:

- it attacks someone's animal
- the owner of an animal thinks they could be injured if they tried to stop your dog attacking their animal.

A farmer is allowed to kill your dog if it's worrying their livestock. Everyone knows how unpleasant dog mess is and it can cause infections, so always clean up after your dog and get rid of the mess responsibly – 'bag it and bin it'. Make sure your dog is wormed regularly to protect it, other animals and people.

A farmer will normally close gates to keep farm animals in, but may sometimes leave them open so the animals can reach food and water. Leave gates as you find them or follow instructions on signs. When in a group, make sure the last person knows how to leave the gates.

Hare coursing is a banned blood sport and is an illegal activity, yet it unfortunately remains common in Suffolk. It is the pursuit of hares using hounds and usually takes place toward the end of August or start of September.

The Hunting Act 2004 made hare coursing illegal and anyone convicted of the offence can be fined up to £5,000 by a Magistrates' Court.

The most obvious sign is a group of vehicles parked in a rural area perhaps by a gateway to farmland, on a grass verge, on a farm track or bridle path. There will usually be estate cars, four wheel drives or vans. If witnessed, such illegal activity should be reported to the police asap.

For more information check out the website:

<https://www.gov.uk/government/publications/the-countryside-code/the-countryside-code>



# Thinking of selling or letting your property?

Please contact

**Ed Russell** BSc (Hons) MRICS

**01638 662231 / 07780 450020**

**ed.russell@jackson-stops.co.uk**

**ESTABLISHED IN NEWMARKET FOR OVER 60 YEARS**

**Specialists in residential and equestrian property with a network of  
over 40 offices including 8 in London and 6 in East Anglia**

## Podiatry/Chiropody

# SUE HART

BSC Hons, MCHS  
HPC Registered CH.12573

Evening and Daytime Appointments  
Clinic or Domiciliary

Treatments:  
Chiropody foot care  
Biomechanical assessments  
Prevention of lower limb conditions  
Diabetic, vascular and neurological assessments  
Fungal infections

**Clinic 01638 555187**

**Mobile 07710155409**

susie.harty@googlemail.com

15 Newmarket Road, Moulton, CB8 8SS





THE PACKHORSE INN  
— MOULTON —

**2 COURSES £18 or 3 COURSES £24**

**MONDAY TO THURSDAY LUNCH**

Bring original copy of advert for a FREE\* pint of beer or glass of wine with food.

\*1 drink per original copy of this advert. We are happy to offer couples from the same household two complimentary drinks, but larger parties will be restricted to one free drink per original advert.

The Packhorse Inn Bridge Street Moulton Newmarket Suffolk CB8 8SP  
01638 751818 [info@thepackhorseinn.com](mailto:info@thepackhorseinn.com) [www.thepackhorseinn.com](http://www.thepackhorseinn.com)

## Speed Watch

---

During 2016 a total of 336

vehicles were recording speeding at 35 mph or over. This was carried out over 27 hours. The average speed of those over 35 mph was 39 mph. The highest recorded speed was 57 mph.

From April we started to note the quantity of vehicles at under 35 mph. From April to December there were 282 vehicles at 35 mph or over and 2097 vehicles were under 35 mph. This equates to 11.85% of all vehicles passing at 35 mph or over.



In the later part of last year and early this year there has been some Police presence in the village leading to many prosecutions, we just need them here on a regular basis. With the weather improving we should be out and about again soon. Several sessions in January had to be cancelled due to poor conditions (the camera doesn't function properly in adverse weather conditions, nor does the operator).

Many thanks to the team of volunteers that helped in 2016. If anyone else would like to give it a try please contact me. Tim James 07768798066 [timjam@hotmail.co.uk](mailto:timjam@hotmail.co.uk)

## Oil Ordering Scheme

---

This scheme operates to negotiate a discounted price with local oil suppliers and also to minimise the number of tankers coming into the village as they are able to do a multi drop of oil deliveries.

The December 9th order was for 35 deliveries and the price was 39.60p per litre. A total of 22,600 litres were delivered.

The January 30th order was for 56 deliveries and the price was 42.25p per litre. A total of 36,650 litres was delivered.

On the 14th February an additional order for 18 deliveries was requested and the price was 44.36p per litre. A total of 12,600 litres was delivered.

Dates for deliveries for 2017:

**March 24th**

**May 15th**

**September 4th**

**November 27th**

To place an order call Lesley James on 01638 482012 or email [moultonoilscheme@outlook.com](mailto:moultonoilscheme@outlook.com)



## **Gas & Oil Specialists Servicing & Repair**

Central Heating • Installation & Repairs • Boiler Replacements • Domestic Plumbing  
Boiler Services • Boiler Repairs & Alterations • Landlord Certificates



**01638 781130**

mobile 07785 936648

email [enquiries@heatingcompany.co.uk](mailto:enquiries@heatingcompany.co.uk)

[www.heatingcompany.co.uk](http://www.heatingcompany.co.uk)

4e Rosemary House, Lanwades Business Park, Kentford, Newmarket, Suffolk CB8 7PN



## **Need your oil tank changed?**

**Telephone 01638 781710**

**Mobile 07785 936648**

**Email [enquiries@oiltankchange.co.uk](mailto:enquiries@oiltankchange.co.uk)**

**[www.oiltankchange.co.uk](http://www.oiltankchange.co.uk)**



**SUPPLIERS & INSTALLERS OF DOMESTIC & COMMERCIAL OIL TANKS**

4e Rosemary House, Lanwades Business Park, Kentford, Newmarket, Suffolk CB8 7PN

# *Moulton contacts:*

## **PARISH COUNCIL**

The Parish Council meets regularly in the school and residents are all welcome to attend. Meeting dates and Agendas are listed on the village website at the bottom of the page and are also regularly posted on the village noticeboards.

### **Parish Councillors:**

|                          |              |
|--------------------------|--------------|
| Bill Rampling (Chairman) | 01638 552631 |
| Julie Bonner             |              |
| David Clarke             | 01638 750263 |
| Ed Chambers              | 01638 750014 |
| Peter Collin             | 01638 750665 |
| Douglas James            | 01638 750897 |
| Mark Price               | 01638 750200 |
| Ron Wallwork             | 01638 751869 |
| Rachel Webb              | 01638 551655 |

### **Clerk to the Parish Council:**

|                |              |
|----------------|--------------|
| Lorraine Stone | 01638 720971 |
|----------------|--------------|

### **Parish Priest:**

|                      |              |
|----------------------|--------------|
| Rev Rosemary Rycraft | 01638 750783 |
|----------------------|--------------|

**Village Archivist :** John Gunson 01638 750131

**County Councillor:** Robin Millar 07545 423782

**District Councillor:** Roger Dicker 01638 750392

**Member of Parliament:** Matthew Hancock  
Parliament Office: 0207 219 7186  
Constituency Office: 01638 576692

### **Moulton Matters:**

Editors: Lisa Rampling 01638 552631  
[Elissa.rampling@gmail.com](mailto:Elissa.rampling@gmail.com)  
Jill Goodwin 01638 551851  
[Jerryjill99@hotmail.com](mailto:Jerryjill99@hotmail.com)

*<http://moulton.onesuffolk.net>*



**giving  
nature  
a home**

## March events

**Saturday 11 March**

**Bundles of Joy**

**10.30am-Midday**

Back my popular demand: We will join the reserve team to bundle some cut reeds which we will use to thatch our viewpoint shelters. We will then return to the visitor centre for a well earned biscuit and hot chocolate. All tools will be provided! Please wear clothes that you don't mind getting mucky and we recommend that you wear wellies.

**This is a Wildlife Explorers club meeting that is suitable for children aged between five and twelve.**

**Children £3 (Non-members), Children £2.50 (Members)**

**All children must be accompanied and accompanying adults are free. No need to book. Price includes car parking.**

**Sunday 19 March**

**Barn owl walk**

**4pm-6.30pm**

Join us for an afternoon walk of around two miles to see the barn owls that call the reserve home.

**Please wear plenty of warm clothes and walking boots or wellies.**

**Adults £6/ Children £3 (Non-Members) Adults £4/ Children £2 (Members)**

**Price includes car parking**

Outdoor clothing and footwear is essential and binoculars are recommended.

**Booking is essential for all events unless stated otherwise.**

For all enquiries and bookings, please contact: 01842 863400 or email: [lakenheath@rspb.org.uk](mailto:lakenheath@rspb.org.uk)

**Other Information:** Most events have outdoor components so please dress appropriately. Stout footwear and warm, waterproof clothing are strongly recommended. We suggest you bring a torch to evening events.

**The RSPB is the country's largest nature conservation charity,  
inspiring everyone to give nature a home.**

The RSPB is a registered charity in England & Wales 207076, in Scotland SC037654

### **Will they or won't they?!**

If you, like me, spend some of your downtime birdwatching in the local area, chances are, you will have noticed that there are more egrets around than there used to be. These pure white members of the heron family are extremely elegant and never fail to brighten up my day.

There are two species that you are now quite likely to see, especially if you come and visit RSPB Lakenheath Fen. These are the little egret and the larger great white egret. Both species used to be rarities in Britain, but they are now increasing every year on our shores.

The little egret is smaller than a grey heron and is pure white. It even has an extravagant plume during the breeding season. Little egrets first nested in Britain in 1996 on Brownsea Island in Poole Harbour, Dorset. As I was born in Poole Hospital, which overlooks this beautiful island, little egrets have always had a special place in my heart. Indeed, my father took me on my first "twitch" in around 1993, aged eight, to see my first ever little egret, which was feeding in Lytchett Bay, which is around 10 minutes walk from the house I grew up in. I am pleased to say that less than 25 years later, there are now around 1000 pairs nesting across Britain. How times change!

The larger great white egret, which is similar in size to a grey heron, is white with a yellow beak. This is a slightly more recent coloniser to Britain. When I saw my first one (which was coincidentally in the same place as I saw my first little egret, Lytchett Bay) in 2005 this species was still a rare visitor to this country. However, this species nested for the first time in Britain in 2012, at RSPB Ham Wall in Somerset. We regularly have a couple of great white egrets wintering on the reserve and up to four are present on the reserve as I write this article in late January.

We are therefore asking ourselves will they (great white egrets!) or won't they nest here at RSPB Lakenheath Fen this year. Birds have been displaying over the reedbeds during the last two springs so we are hoping that this year will be the year that they finally attempt to nest here. Whereas little egrets nest in trees, great white egrets nest in reedbeds. Fortunately, we have a large area of reedbed here at Lakenheath Fen so fingers crossed!

The good news is that both species can regularly be seen from the Washland viewpoint, which is only a five minute walk from the visitor centre. You therefore don't necessarily need to walk too far to see them! If you do come looking for little egrets and great white egrets on the reserve over the next couple of months, we hope you see them!

## Report from Robin Millar, County Councillor



It has been another busy few months across the County.

Highways continues to be a hot topic and has certainly been high on the council's agenda over the past year. The reducing budgets and large backlog of works called for a major transformation of the service to maximise output and impact.

The main changes that have been rolled out over the past year as part of the transformation have included the creation of integrated teams. These have delivered 2.5 million square metres of surface dressing between April and August 2016 with a similar programme planned for this year. It has also seen the creation of teams to specifically deliver schemes funded from County Councillor Local Highways Budget and the delivery of drainage programmes.

This has caused some disruption as the old area teams are now rolled into a central, Ipswich based function. I understand the need for consistency across the country but the truth is the Western Area team performed well. I have made a point of tracking down the new financial controller and building that relationship; so much of getting things done comes down to developing good working relationships. (Although I must say when he gave me his details in Ipswich I told him I was in Newmarket and he can visit me as easily as I can him!)

The transformation programme has also focused on more innovative ways of working such as adopting the use of the '15 minute delay' traffic management option (rolling stop) for small repairs as opposed to expensive road closures and temporary traffic lights.

We have begun to see the benefits of these changes locally with the recent resurfacing works in the village. We were able to incorporate into these works specific attention to particular issues you raised. These included the layby outside 24/26 Chippenham Road, reinstated white lining next to the shop and the replacement of all broken and loose kerbstones.

Looking ahead, designs have also been drawn up for the footpath outside the school. I am pleased to report that the scheme had been ordered and I am pressing for a date for commencement for these works. I hope it can take place during the Easter holidays. Any surplus Section 106 funds which have been allocated for this project will go towards other improvements in the village. I believe the Parish Council are due to consider these at their February meeting.

I started with a comment on the busy-ness of the County Council work and it shows little sign of easing in 2017. Our recent budget announcement (a zero general rate rise and 3% increase on the social care element) highlighted the continuing pressures on the budget. I intend to offer myself as your councillor for the next four years at the May election, and if re-elected, within a Conservative administration will hope to continue with the important questions of reform that face all levels of government.

Finally, I would like to take this opportunity to thank you for the chance to work with you over the last twelve months and offer you all good wishes for the year ahead.

**Cllr Robin Millar**



# TRADE DIRECTORY

## I J GARDENING SERVICES

ALL ASPECTS UNDERTAKEN

Tree, Shrub and Hedge Planting/Pruning  
Turfing, Seeding and Garden Maintenance  
Patios, Fence and Trellis Work

TEL 01638 500298

## AROMATHERAPY & Reflexology by Rosie

Home Visits Available  
Or Come and Visit Me In Newmarket  
[www.rosiehitchins.co.uk](http://www.rosiehitchins.co.uk)

Tel: 01638 603286 / 07989213147  
£10 Off Your First Treatment with this Advert

## G C SORE

For all PVCU installations  
Windows, Conservatories, Facias etc  
MANY SATISFIED CUSTOMERS  
IN MOULTON  
t. 07831 591700

## ELITE ELECTRICAL

DOMESTIC INDUSTRIAL COMMERCIAL  
INSTALLATION & MAINTENANCE  
P.A.T. TESTING  
FREE ESTIMATES / 24 HOUR CALL OUT  
tel/fax: 01638 552641  
mob: 07816 040672

## RICHARD FORTEY

For the very best  
AERIAL & SATELLITE SERVICE  
*Many satisfied customers in the village*  
Telephone: 01638 662119

## ANTIQUES

Antiques purchased for cash  
top prices paid - also a professional  
and discreet House & Barn clearing Service  
Ring Mick on 01638 554382

## Experienced Sage Accounts Operative/Book Keeper

Moulton Based.Flexible  
Reasonable Rates to suit requirements  
Vat Returns Submissions; Spread Sheets; .Credit  
Control Services.etc  
Available to work from home or local Office.

Please contact :-  
[judithknapman@btinternet.com](mailto:judithknapman@btinternet.com) 07836 311144

## CARPENTRY, JOINERY & PROPERTY MAINTENANCE

### D & S

Anthony Dobson & Mark Smith

07958 232787 • 07717 744984

[info@dandscarpentry.co.uk](mailto:info@dandscarpentry.co.uk)

Information & Free quotations

## Moulton Village Hall

### Management Committee Officers:

|                    |                  |        |
|--------------------|------------------|--------|
| Chairman           | Richard Marshall | 750488 |
| Deputy Chairman    | Dale Burch       | 552055 |
| Treasurer          | Jerry Goodwin    | 551851 |
| Bookings/Secretary | Jill Goodwin     | 551851 |

Jill Goodwin is responsible for taking bookings.

To make bookings, or make enquiries about the hall, please contact Jill on 01638 551851 or e-mail: [bookingsMVH@moultonsuffolk.co.uk](mailto:bookingsMVH@moultonsuffolk.co.uk)

If you are interested in joining a group or activity, set out below are the names and contact details you will require:

|           |   |       |  |               |
|-----------|---|-------|--|---------------|
| Monday    | Pre-School                              | 09.15 | Pauline Paines   | 07905 786303  |
| Monday    | Yoga                                    | 1900  | Bridget Pooley   | 07758 540739  |
| Tuesday   | Moulton Mini Tots                       | 10.00 | Ond Finneran   | 07787 292294  |
| Tuesday   | Healthy Walks                           | 10:00 | Ron Wallwork   | 751869        |
| Tuesday   | Luncheon Club                           | 13:00 | Lisa Rampling  | 552631        |
|           | (Last Tuesday in the month)             |       |  |               |
| Tuesday   | Cubs/Beavers/Scouts                     | 18.00 | Geraldine Law  | 750845        |
| Wednesday | Pre-School                              | 09.15 | Pauline Paines   | 07905 786303  |
| Wednesday | Dog Training                            | 18:45 | Sue Hough  | 07836 624684  |
| Thursday  | Pilates                                 | 09.15 | Alison Wilson  | 07752 360 839 |
| Thursday  | Upholstery                              | 10.30 | Danny Niven  | 07840 777053  |
| Thursday  | Bridge club                             | 14.00 | Pat & Paul Harris  | 500325        |
| Thursday  | Badminton                               | 20.00 | Yvonne Slater  | 750547        |
| Friday    | Pre-School                              | 09.15 | Pauline (as above)   |               |
| Friday    | Hop fit                                 | 18:00 | Nikki Hayes  | 751208        |
|           |   |       | <a href="mailto:nikkihayes9@aol.com">nikkihayes9@aol.com</a>                     |               |
| Friday    | Youth Club ( 2wkly) awaiting new leader |       |  |               |
| Friday    | Carpet Bowls                            | 19:15 | Dick Marshall  | 750488        |
| Saturday  | Dance studio                            | 08:30 | Rachel Glenn   |               |
|           |   |       | <a href="mailto:rachel@dancexcelacademy.co.uk">rachel@dancexcelacademy.co.uk</a> |               |
| Saturday  | Panthers Football                       | 10.00 | Nicola Talbot  | 552358        |
| Sunday    | Panther/                                | 10.00 | Steve Wilson   | 07538241521   |
| Sunday    | Veterans                                | 10:00 | Mark Price   | 750200        |

## Telephone Directory

### MEDICAL

|                        |              |
|------------------------|--------------|
| Addenbrookes Hospital  | 01223 245151 |
| Newmarket Hospital     | 01638 558400 |
| West Suffolk Hospital  | 01284 713000 |
| Oakfield Surgery       | 01638 662018 |
| Orchard House Surgery  | 01638 666887 |
| Rookery Medical Centre | 01638 664338 |

### CHURCHS

|   |                       |
|---|-----------------------|
| All Saints Church (Rev Max Osborne)                           | 01638 662514          |
| Catholic Church (Fr Simon Blakesley)                          | 01638 662492          |
| St Peters Church c/o Vicarage, Gazeley (Rev Rosemary Rycraft) | 01638 552630          |
| St Peters Church Wardens (Bob Saltmarsh & Anne Garmston)      | 01638 750190 & 751188 |

### NEWMARKET

|                        |              |
|------------------------|--------------|
| Citizens Advice Bureau | 01638 665999 |
| Day Centre             | 01638 664262 |
| Dial-a-Ride            | 01638 608080 |
| Library                | 01638 661216 |
| Sports Centre          | 01638 662726 |

### MOULTON VILLAGE

|  |                     |
|--|---------------------|
| Parish Council Clerk (Lorraine Stone)                  | 01638 720971        |
| Parish Council Chairman (Bill Rampling)                | 01638 552631        |
| Ash Tree Veterinary Surgery                            | 01638 554477        |
| Moulton Matters Editors (Jill Goodwin & Lisa Rampling) | 01638 551851/552631 |
| The Packhorse Inn                                      | 01638 751818        |
| Village Hall Bookings (Jill Goodwin)                   | 01638 551851        |
| Village Shop (Mick & Kathy)                            | 01638 750242        |
| Village Bulk Oil Ordering Scheme (Lesley James)        | 01638 482012        |
| Village School Head Teacher (Debs Shipp)               | 01638 750236        |
| Village Website (Lisa and Mike Rampling)               | 01638 552631        |

### TRAVEL

|                         |              |
|-------------------------|--------------|
| Newmarket Taxi Hire     | 01638 561561 |
| National Rail Enquiries | 03457 484950 |
| Stagecoach – Cambus     | 01223 423250 |

### EMERGENCY

|                         |     |
|-------------------------|-----|
| Fire / Police Ambulance | 999 |
|-------------------------|-----|

### NON EMERGENCY

|                        |              |
|------------------------|--------------|
| Crime Stoppers         | 0800 555111  |
| Gas                    | 0800 111999  |
| Power                  | 0800 7838838 |
| Water                  | 08457 145145 |
| Police – Non Emergency | 101          |
| NHS                    | 111          |

# Gracewell of Kentford

*A care home as  
individual as you are*



**Gracewell of Kentford** is a purpose-built, luxury nursing home. We specialise in many different areas of care: residential, nursing, memory, rehabilitation and respite care so our residents have no requirement to move elsewhere if their care needs change.

Interested and want to find out more?  
Call **01638 555090** or email:  
[haa.kentford@gracewell.co.uk](mailto:haa.kentford@gracewell.co.uk)

**Gracewell of Kentford (formerly Kentford Manor)**  
Jeddah Way, Kennett, Newmarket, Suffolk CB8 8JY

  
**Gracewell**  
HEALTHCARE

*A New Way to Live Well*



[GracewellKentford.co.uk](http://GracewellKentford.co.uk)